

Cole Creek Angus Ranch

MATERNAL PERFORMANCE

Performance Raised • Performance Proven

PRODUCTION SALE

Breeding Angus For The Grasslands Of America

MONDAY • MARCH 25, 2024 • 1:00 PM



SALE LOCATION

MIDLAND BULL TEST

COLUMBUS, MONTANA

Greg Golden • (406) 962-3743 - Stacie • (406) 694-7254

See inside cover for other contact phone numbers.

Good day Golden Family,

I'm happy to share this carcass data with you for the calves we have harvested from your Black Cedar 1100 bull. As you can see, he cut 72% Choice, 24% Prime, YG average at a mid-3, greater than 1 square inch of REA to 100 lbs. of live weight. All of these cattle are out of first calf heifers, and 52% of them were harvested as true calf feds, which tells me there is certainly adequate growth in these beasts.

We're pretty proud of the daughters we've kept out of him as well. They are my favorite line in our production system right now. They are making great mothers, very attentive, and look like the lasting kind. We run in pretty tall country, 7000' -8500', and have seen no signs of brisket issues. They give us worlds of mating options.

In closing, I feature 1100 will be a part of our program for a long time, so I hope you are putting up plenty of semen on that SOB. If for some reason supply gets tight on him, I'd sure appreciate a phone call.

Thanks for the opportunity to purchase these genetics,

Nick Wamsley
Silver Spur Ranch

Sale Day Phone Numbers:

If you can't get Greg :

Greg: 406-839-7588 Cell

Stacie: 406-694-7254

Jon: 406-694-7253

Natalie: 281-825-9330

Claudia: 406-647-3843

Josh: 406-647-6676

Midland Bull Testing Ring: 406-322-5597

Leo McDonnell - Auctioneer : 406-780-0176

John Goggins - Ring Man: 406-698-4159

Cole **C**reek **A**ngus **R**anch

**49th Annual
Production Sale**

Monday

MARCH 25, 2024

At Midland Bull Test • Columbus, Montana

Lunch • 12 Noon Sale • 1:00 PM

Selling

50 Bulls

23 Heifers

QUALITY PERFORMANCE YEARLINGS

Tested BVD-PI Free

**Auctioneer • Leo McDonnell
(406) 780-0176**

Ring Service

John GogginsWestern Ag Reporter
Cell: 406-698-4159

TERMS & CONDITIONS

Terms are cash, unless prior arrangements have been made.

Registration Certificates will be transferred within 30 days of the sale to buyers. When making settlement, please leave specific instructions with a clerk for transfer. Each animal will be sold to the highest bidder and the auctioneer will settle any disputes as to bids. Announcements made from the auction block take precedence over any printed matter. Everyone attending the sale does so at their own risk, and the Golden Family and Cole Creek Angus and Midland Bull Test assume no liability for any accidents that may occur.



**GREG GOLDEN
(406) 962-3743**

**Box 94
Joliet, MT 59041**

WWW.COLECREEKANGUSRANCH.COM

PLEASE BRING THIS CATALOG WITH YOU SALE DAY!

The Golden Family



Welcome To The Sale!

Cole Creek Angus • Breeding Angus For The Grasslands of America!

Welcome to our 49th sale.

For over 60 years our living has come from cattle in the true grassland environment.

Functional Fertility: I recently read articles in two publications concerning why there is a trend for so many open cows. All they talked about was body condition of the cows and if they were not a 5-6, you need to change your inputs and feed more high input supplement feed so those cows will breed. Same Ranch, same program that your dad and granddad have been working for 80 years. Again, you have to change. Not once did they say that extreme EPD's, terminal growth, and race for the most created cows, too big for your ranch environment. Example: \$Beef EPD is geared towards calves with a terminal end point and NO replacements retained. The Higher the \$Beef EPD, the more TERMINAL. When you have maxed out the efficient maternal 1200-1300lb range cow, the only way to increase weaning weight is to increase cow size. Bigger cows = Bigger calves = bigger weaning weights. And there in lies the problem for bigger cows - they take more inputs to function. Not one time did they mention that synchronization and drugs to make them cycle to get bred has taken the natural sort out of Mother Nature to show which cows can cycle on low inputs and get bred without Dr. Drug, without the high supplement input environment. The Angus breed has become a race numbers and most Angus breeders have forgotten about the importance of maternal functional size for the grassland ranchers. Remember - in the American Angus Association, environment is never figured into the numbers.

Longevity: I can't wait for when the create the longevity number to punch up the dams to see how many calves weaned naturally for how many generations. The age of the cow to the number of progeny weaned naturally - longevity and fertility go hand in hand. Cole Creek Angus raises Angus in the commercial man's environment and proves them over time for the commercial cattleman, who wants Angus cows that are low input grassland cattle. Angus cattle that go out and harvest grass, travel, raise a calf and breed back on time by a herd bull.

At Cole Creek Angus we breed for low input Angus genetics. The 1200-1300lb cow wintered on hay and straw when the snow covers the grass, and only grass the rest of the time. We breed for feet, fertility, and function in range cows that can travel and still turn grass into dollars.

The bigger is better breeders have lost sight of the value of what made Angus-Angus. Extreme EPDs with massive input feed, drugs to cycle and cattle bred out of the environment of the grassland ranchers have turned fertility, feet and function into the "F" words of the Angus breed. Be careful of your selections as a grassland rancher or you'll be adding another "F" word of your own to go along with these failed traits.

GUARANTEES: Our bulls are semen checked and no borderline flunking bulls are sold. We guarantee they will breed your cattle with quality semen. We do not guarantee against death, lightning, sickness, broken legs, injured or broken penis. In a breeding environment where bulls run together, it takes only one bull that's an ass-hitter to break penises. We guarantee the heifers breeds and gets pregnant. If they don't, return them and we will refund your money. This is the only guarantee we expect when we buy cattle and that's the one we give. We want you to come to our sale for the maternal grassland genetics and not the guarantees which create the false run-you-up, number buyer fake sales to cover their credit loss. Bid on our cattle for their worth.

We believe a breeder needs to be totally honest with all their customers, treat all their customers the same and be totally honest with all their cattle, treat all their cattle the same. No games. We are not going to promise you fictitious weaning weights and numbers but we will promise you Angus cattle right in their type for production from grass. Ours is a program that has always bred for the maternal Angus cow and tested and selected for efficiency in the often stressful times of the dryland grass operation; that it takes ten or more calves to make a proven cow and that after over 50 years, generation after generation in this type of selection environment, Angus that have stood the best of time - maternal performance grassland Angus.

We invite you to Cole Creek Angus anytime. If you have questions or if I can help in any way, call me anytime - 406-962-3743

Greg

GENETIC BASE

When cattle have been pushed to harvest grass in a rugged dry land operation and the breeder lets Mother Nature put the selection on the cattle (in other words, he doesn't interfere with extra feed, supplement, tubs and drugs to breed) the truest efficient genetic base sorts to the top.

After years of this type of selection, you create cattle where EVERYTHING has been tested, the true genetic base. This is the type of selection that makes cows. These are the type of cattle that pass on feed conversion, fertility and efficient maternal for generations. They make the difference.

This is not done with number selection, dollar values, feed trucks and corn silage, synchronization and drugs to breed, breeding terminal cattle and convincing yourself they are maternal cattle.

You keep it real, push your cattle to see their faults. It's not a quick fix - it is a test of time. There is no better way to test feed conversion than in an operation where cattle are pushed to test efficiency.

It's not the cattle you see that are fat as hogs and have been overfed to cover up their faults. Those fat cows are nice to look at but when you start making selections from this environment, and if you are selecting on the most, those are the cows that, when put in a commercial man's environment, wind up looking like two year old steers. They come in open and have no efficiency as a maternal cow.

When the commercial man has to start feeding twice as much and his cows stay skinny and are in poor condition, he will come back and start looking for cattle with true genetic base.

And for the love of the Angus breed, thank the breeders who have stayed the course and did not fall victim to all the gimmicks or otherwise THEY, the harvesters of grass, will be going outside the Angus breed to try and find cattle that will make efficient maternal cows.

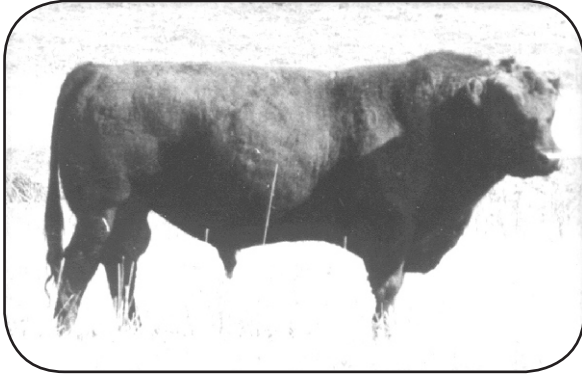
MATERNAL PERFORMANCE

Ideal Range - The 1100-1300 lb. Rule of Cow. By breeding for a uniform one unit herd where ideal size has been met - what's left? Improving on efficiency through performance. The closer you get, the higher the competition. Uniformity in a herd breeds predictability and uniformity in a calf crop. Keep in mind the end product - size of the ideal finished steer. The goal then - improve on the performance to convert roughage to beef, always striving to produce the proven female using sires for that end result. Easy fleshing, high volume, high maternal, efficient proven females - improving on, through performance, staying in the ideal range rule of cow - gives you predictability and increased weaning weights through efficiency not size. Heifers that will make replacements, steers that will finish in less time with bred in ability to convert roughage. These fuel efficient Angus summer better, winter better and raise better calves because you've improved on their ideal size through efficiency - not added weight by size. We're breeding for a herd of the ones that keep you in business. Where cattlemen can say - "Don't have to worry about that bull, he's out of a Cole Creek cow!"

You know there's a lot of people talk the talk. I call them fad chasers. They'll breed the numbers and don't really care what the animal's makeup is. Bad uddered, structurally incorrect, tight gutted, sway backed, no nuts or no ass, they don't care because the numbers are good. Nothing gives me more satisfaction than seeing an honest herd of maternal Angus with efficiency. I hold the greatest respect for those Angus breeders who are in it for the betterment of the breed, who know that it takes efficiency to flesh from grass. It's the quality of your cows that will reflect this breed for generations to come, long after the fad chasers are long gone.

Anybody can breed numbers (EPDs). True proven performance is a test of time - keeping it real, all cattle indexed as one unit, all cattle run in an equal environment. No B.S. They earn it. That's Cole Creek Angus!

HERD BUILDERS



JUANADA 7 OF PJM

Juanada Lad of RR 9
JUANADA LAD OF RR 22
 Dixie Blackcap 53.....

Juanada Prince of GMR
 Kates Lassie of AA
 Black Prince of Dixie 2
 Dixie Blackcap 106
 Bandomere of RR
 Dixie Erica of RR3
 Rainier 2 of BVR
 Miss Alyne of Rockvale

NR 107.4 • GR 119.5 • YR 113.5

BEPD	WEPD	Milk	YEPD	SEN	SW
+1.4	-3	+15	-9	+40	-14.85

6418221 • Birth Date: 1/30/69 Juanada 7 - the proven Angus female producer. 7's offspring have raised bulls that have topped Midland Test in performance and at the dollar value. We still use 7 after 40 years and he still produces a proven female. His cows have the best bags and teat of any bull we've ever used. We've bred him to his daughters, sons to sisters, and all the bulls we've bred and used have had his influence in their pedigree. A herd builder that is clean. 7 sired the second high selling bull at Midland Test in 1974, along with 3 daughters who went on to win the first prize Get-Of-Sire Award at the Ohio Premier Show of 1974. Also gave Cole Creek Angus the 1974 Premier Breeder Award at the Eastern Region Junior Angus Heifer Show at Columbia, South Carolina. 7 does produce Performance Raised - Performance Proven Angus. Truly the best and most proven son of Juanada Lad of RR 22.



COLE CREEK JUANADA LAD 81T

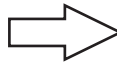
Juanada Lad of RR 22
JUANADA 7 OF PJM
 Bandomere Carol of PJM.....

Juanada Lad of RR 9
 Dixie Blackcap 53
 Bandomere of RR 5
 Rainiers Carol of PJM
 Shoshone Encore 6310
 CAR Miss Forever 546
 Cole Creek Inciter 253
 Cole Creek Juanadamere 32

BEPD	WEPD	Milk	YEPD	SEN	SW
+2.5	+30	+24	+30	+11	+28

Act. SC 2/28/07: 39 cm. • 2 Yr sc: 46 cm. • BW 83 • NR 114 • GR 96 • YR 105
 • 365 Wt. 1128 • Mature wt. 2150 • Mature SC 48
 Carcass: Adj. Scan Wt: 1048 • IMF 4.35 • RE 11.1 • Fat .19

HIS DAM

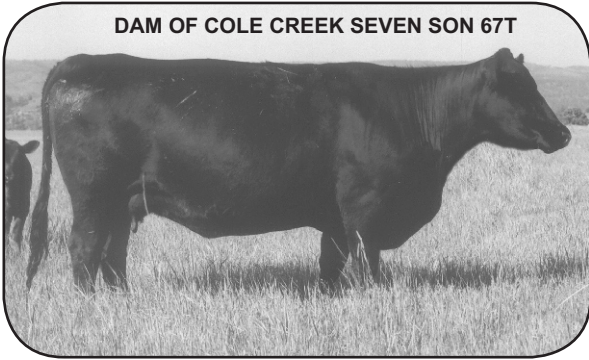


HERD TAG 119 • COLE CREEK JUANAMERERE 34N

15483092 • Birth Date: 2/22/06 Old pure, rock solid genetics in Juanada Lad 81T. He is a son of our Juanada 7 of PJM bull born in 1969. His dam is one of my favorite Encore 0544 daughters. She's feminine, long necked, deep bodied with length of hip and depth of flank. She posts 11 NR @ 103 and 9 YR @ 103. His granddam is a Cole Creek Inciter 253 crossed on a Cole Creek Gold Bar 97V dam. 253 and 97V are brothers out of Cole Creek Juanada 94T, 3 times Forever 376 and 4 times Juanada right up front with 2 of the Juanada daughters being out of Juanada 7. Juanada Lad 81T was the heaviest calf off the cows in October of 2006. His actual scrotal as a yearling was 39 cm. , as a two year old, he was 46 cm. and as a three year old he was 48 cm. Progeny are easy fleshing, maternal grassland cattle.

HERD BUILDERS

DAM OF COLE CREEK SEVEN SON 67T



COLE CREEK SEVEN SON 67T

15483012 • Birth Date: 2/16/06 Seven Son was high selling bull in 2007 going to Bruce Palmer in Nebraska. He is a direct son of our old Juanada 7 of PJM bull and was the high gaining bull. Dam is a Quantum 3330 and was one of the 18 I kept of the 2,3 and 4's from the cow sale. She has 10 NR @ 96 and 7 YR @ 104. Grand dam was a Chevis 3432 out of a Pathfinder Rito 054, then back to a Juanada 7 dam. Daughters are excellent uddered and are proving to be hardy range cattle. Sire of Cole Creek Seven Black 311.

Juanada Lad of RR 22 Juanada Lad of RR 9
JUANADA 7 OF PJM Dixie Blackcap 53
 Bandomere Carol of PJM Bandomere of RR 5
 CH Quantum 3330 Rainiers Carol of PJM
COLE CREEK CLOVANADA 136M GDAR Quantum 1245
 Cole Creek Clovanada 1395 Dixie Erica of CH 6180
 RR Chevis 3432
 Cole Creek Clova Juanada 51W

BEPD	WEPD	Milk	YEPD	\$EN	\$W
+4.5	+33	+20	+67	+11	+16

BW 88 • NR 101 • GR 121 • YR 1184 • Act. Yrlg. SC 35
 Act. Scan Wt. 1071 • IMF 4.44 • Ribeye 11.6



COLE CREEK PURE JUANADA 679

19545379 - Birth Date 2/25/19 This Juanada 7 is out of a Pathfinder Black Cedar 46P Dam, Herd Tag 798 who has 11 calves @ 107 NR. The Juanada cows are moderate tuff grassland cattle. Gran Dam is a Juanada Goldmere 31N who Sire is a Juanda Lad of RR 22 born 1967. Great Gran Dam is Back to Juanada 7 who's Sire is Juanada Lad of Rr22 born in 1969. Old pure angus genetics up front in pedigree.

Juanada LAD of R R 22
JUANADA 7 OF J M
 Bandomere Carol OF P J M
 Cole Creek Black Cedar 46P
COLE CREEK JUANADACAP 120I
 Cole Creek Juanadacap 134R

Juanada Lad of R R 9
 Dixie Black Cap 53
 Bandomere OF R R 5
 Raineres Carol OF P J M
 CH Quantum 6247
 Cole Creek Clova Juanada 67
 Cole Creek Goldmere 31N
 Cole Creek Janada Cap 882

BW 65 • NR 103 • GR 93 • YR 99 • 365 1044
 2 YEAR SC • 41

BEPD	WEPD	Milk	YEPD	\$EN	\$W
-0.2	+21	+23	+30	+15	+23



COLE CREEK JUANADA LAD 104

12184933 • Birth Date: 2/23/94 A Juanada 7 son out of a Cole Creek Q Bar 103T Pathfinder dam. Keeping the Juanada line up front, the best cattle we've found to keep, wean and rebreed in the stressful times of Mother Nature and a true rugged short grass environment. 104 has 128 calves at 102 weaning.

Juanada Lad of RR 22 Juanada Lad of RR 9
JUANADA 7 OF PJM Dixie Blackcap 53
 Bandomere Carol of PJM Bandomere of RR5
 Cole Creek Q Bar 103T Rainiers Carol of PJM
COLE CREEK JUANADA BANDO 132X Basin Q Bar 163
 Cole Creek Juanada Bando 12V Cole Creek Jumbolean 954
 PJM Power 291
 Cole Creek Shobando 137M

BEPD	WEPD	Milk	YEPD	\$EN	\$W
+2.9	+23	+11	+28	+33	+6

BW 78 • NR 101 • Injured on test • Mature scrotal 44 cm.

COLE CREEK ANGUS RANCH

PERFORMANCE RAISED PERFORMANCE PROVEN

COLE CREEK 523 Cedar W107

20161008 - Birth Date 2/20/21 Dam is our best Black Seal 230 with 8 NR @ 106. Excellent feet, udder and top line. Granddam had 13 NR@98 but again excellent feet, udder and top line. We kept Cedar W107 to carry on Auto 717 Herd Bull. We lost him to frozen nuts, so this is the only calf crop we have. Bummer.

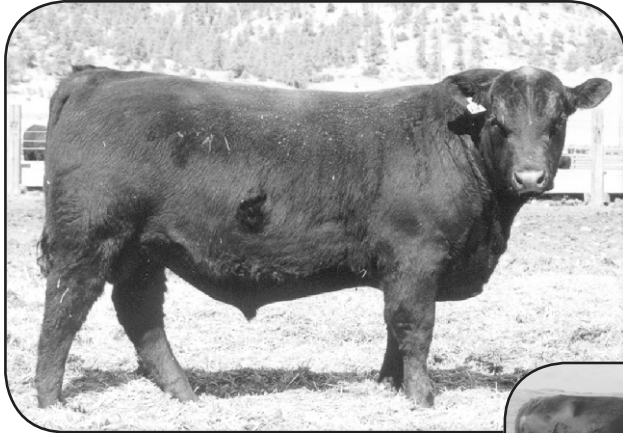
Cole Creek 1100 Automatic
COLE CREEK 1322 AUTO 717
 COLE CREEK JUANAD G513
 Cole Creek Black Seal 230
COLE CREEK JUANADA BIRD 224
 Cole Creek Juanada Bird 38N

Cole Creek Black Cedar 1100
 Cole Creek Eileen Pride 102W
 Cole Creek Juanad Gold 92P
 Cole Creek Juanada G 48U
 Cole Creek Black Cedar 46P M
 Cole Creek Juanada g 53T
 HBR Encore 0544
 Cole Creek Juanada 311

BW 83 • NR 117 • GR 119 • YR 118 • 365 1158
 YEARLING SC • 37

BEPD	WEPD	Milk	YEPD	\$EN	\$W
+1.6	+25	+33	+55	+8	

COLE CREEK FULL RUT 299 (Deceased)



HBR Rito Bravo 1441
HBR ECLIPSE 7116
 Shoshone Ester 3116

Juanada 7 of PJM

COLE CREEK JUANADA CAP 882
 Cole Creek Rita Blackcap 20W

CSU Rito 4114
 Erica Lassie KMA 2003
 Shoshone Quent 7103
 Shoshone Ester 3111
 Juanada Lad of RR 22
 Bandomere Carol of PJM
 Rito 054 GDAR
 Cole Creek Oscar Blackcap 3R

BEPD	WEPD	Milk	YEPD	\$EN	\$W
+3.2	+26	+22	+31	+18	+22

Yearling Scrotal: 37.5 cm • BW 90 • NR 103 • GR 113 • YR 107 • 365 Wt. 1200

13430119 • Birth Date: 2/17/99 Full Rut is an Eclipse son out of a Juanada 7 dam who has 7 NR 108. His dam is a Pathfinder. Grand Dam Pathfinder 054. He's really thick and correct. I've taken a little guff about his name but when he was a calf in the A I pen, he was a little heat detector. He'd curl his lip back and follow the cows in heat like a big muley buck in full rut after does. So now you know. We lost Full Rut to nitrate. We kept two sons to carry on - Cole Creek Cut A Track 46M and Cole Creek Rutten Buck 40M.

COLE CREEK RITA BLACKCAP 20W

Pathfinder 054 daughter • Herd tag 805
 Grand dam of Full Rut who posts 13 NR @109 and 8 YR @ 103

HIS SONS

COLE CREEK CUT A TRACK 46M



HBR Eclipse 7116
COLE CREEK FULL RUT 299
 Cole Creek Juanada Cap 882

ZRP Intensifier 0021

COLE CREEK JUANADA RITA 1064
 Cole Creek Juanada Rita 681

HBR Rito Bravo 1441
 Shoshone Ester 3116
 Juanada 7 of PJM
 Cole Creek Rita Blackcap 20W
 Cedar Hills Intensifier 8017
 Rev Rose of CH 5004
 Cole Creek Gold Bar 97V
 Cole Creek Jumborita 54W

BEPD	WEPD	Milk	YEPD	\$EN	\$W
+2.3	+24	+26	+30	+14	+26

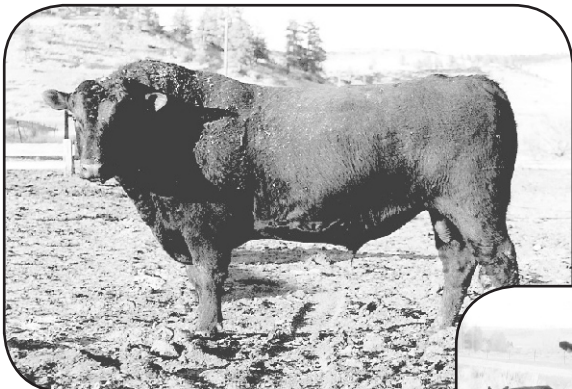
**BW 86 • NR 111 • YR 102 • 365 Wt. 1120 • Mature Wt. 2130 •
 Act. Feb. 02 SC 36.5 cm • 4/23/04 SC 44 • 4/2/05 SC 46**

13942886 • Birth Date: 3/4/01 - A Full Rut son we kept for cows. His dam is a ZRP Intensifier 0021 who has 5 NR 108 and 4 YR 106. The grand dam was a Cole Creek Gold Bar 97V who had 3 NR 103 and 2 YR 104 but was sold when she got a lump. Then go to the 054 great grand dam also pictured here, Jumborita 54W. We are excited about this Full Rut 299 son and his ability to produce females for the world of efficiency. Notice how these bulls scrotal circumferences continue to grow as they mature. I feel this is a real important factor in both fertility and longevity in cattle. Daughters are excellent uddered. Real good mothers and easy to be around.

COLE CREEK JUMBORITA 54W

Cow Tag 828 - Pathfinder 054 daughter, Great Grand Dam of Cut A Track who has 12 NR 107 and 11 YR 107.

COLE CREEK RUTTEN BUCK 40M



HBR Eclipse 7116
COLE CREEK FULL RUT 299
 Cole Creek Juanada Cap 882

Cole Creek Inciter 253

COLE CREEK JUANADA 1287
 Cole Creek Juanada 421

HBR Rito Bravo 1441
 Shoshone Ester 3116
 Juanada 7 of PJM
 Cole Creek Rita Blackcap 20W
 ZRP Intensifier 0021
 Cole Creek Juanada 94T
 Cole Creek Gold Bar 37V
 Cole Creek Juanada 117W

BEPD	WEPD	Milk	YEPD	\$EN	\$W
+3.1	+21	+24	+34	+14	+15

BW 84 • NR 113 • YR 104 • 365 wt. 1146 • 4/23/04 SC 43 • Mature Wt. 2,095 lbs.

13943086 • Birth Date: 3/16/01 - A Full Rut son we kept for heifers. His dam is a Pathfinder Inciter 253 who made Pathfinder at 3 calves. This was through the drought years and she's posted 4 BR @ 96. Look at his grand dam, the herd tag 909 female who had the high seller (also a Full Rut son) going to Dockweiler Angus in Nebraska in our 2002 sale. Again, breeding for females in the no excuse world of efficiency.

COLE CREEK JUANADA 421

Herd Tag 909 • Pathfinder Juanada, grand dam of Buck, who has 12 NR 107 and 9 YR 107. Pictured in the spring of 2002 with her calf at age 12.

HERD BUILDERS



COLE CREEK GOLD BAR 97V

11130371 • Birth Date: 2/16/88 We bought this bull back from a commercial breeder after seeing his calves out of heifers. Used him to breed our heifers. Sire: Cole Creek Q Bar 103T - Dam: Triple bred 376, with one shot of Traveler and a straight Juanada bottom. Twice bred to Juanada 104 PJM, the dam of Montana Power, Norseman and Cash. Easy calving, cow making son-of-a-gun. This is one bull I wished we would have collected. We would be using him hard today.

- Ankonian Q Bar E764.....
- BASIN Q BAR 163**
- JRS Pride of 64.....
- COLE CREEK Q BAR 103T**
- Basin Jumbo 1755.....
- COLE CREEK JUMBOLEEN 954**
- Cole Creek Excalimere 661.....
- 376 PJM 141.....
- NORSEMAN 73 PJM**
- 376 PJM 791.....
- COLE CREEK JUANADA 94T**
- 376 PJM 141.....
- COLE CREEK TRAVELER 43R**
- Cole Creek Traveler 26N.....
- Camilla Eileenmere 1764
- Camilla Ellen Erica 52Y
- JRS Heather Bardolier 60
- Pride of Cole Springs 10
- Jumbo K of Willabend 6022D
- Basin Zara 4693
- Juanada 7 of PJM
- Sunrise 84 of Cole Creek
- Candolier Forever 376
- Juanada 104 of PJM
- Candolier Forever 376
- Juanada 525 of PJM
- Candolier Forever 376
- Juanada 104 of PJM
- QAS Traveler 23-4
- Cole Creek Juanadamere 772

NR 102 • GR 105 • YR 104 • 365 Wt. 1099 lbs.
Mature Weight: 2400 lbs • Mature Scrotal: 46 cm.

BEPD	WEPD	Milk	YEPD	\$EN	\$W
-2.2	+0	+22	+9	+26	-2



COLE CREEK INCITER 253

11968947 • Birth Date: 3/8/93 Inciter is a bull we chose to keep the 97V or Cole Creek Juanada 94T influence in our herd. 94T traces three times to 376, once to Traveler with a straight Juanada bottom. Note: Cole Creek Juanadamere 722 and Juanada 525 of PJM are direct daughters of Juanada 7 PJM. Inciter's sire, ZRP Intensifier 0021 is a double bred 054, 2100, 60E combination. Maternal performance here! Inciter's daughters have exceptional udders and are really feminine. Inciter has 28 daughters in 5 herds who weaned 86 calves at 101 ratio. The Inciters have a longer growth curve and when they mature, they are range efficient.

- Rito 2100 GDAR.....
- Cedar Hills Intensifier 8017
- Susanna of CH 5004.....
- ZRP INTENSIFIER 0021**
- Early Sunset Emulous 60E.....
- Rev Rose of CH 5004
- Rev Rose of CH 3084.....
- Rito Ever 865 GDAR
- Blackcap Lady 999 GDAR
- Rito 054 GDAR
- Susanna of Cedar Hills 907
- Biffles Emulous 775
- Early Sunset Pride 88
- Rito 054 GDAR
- Revolution Rose of CH 867
- 376 PJM 141.....
- Norseman 73 PJM
- 376 PJM 791.....
- COLE CREEK JUANADA 94T**
- 376 PJM 141.....
- Cole Creek Traveler 43R
- Cole Creek Traveler 26N.....
- Candolier Forever 376
- Juanada 104 of PJM
- Rito 054 GDAR
- Revolution Rose of CH 867
- Candolier Forever 376
- Juanada 104 of PJM
- Candolier Forever 376
- Juanada 525 of PJM
- Candolier Forever 376
- Juanada 104 of PJM
- QAS Traveler 23-4
- Cole Creek Juanadamere 772

BW 93 • NR 100 • GR 109 • YR 104 • 365 1230
Yrlg Scrotal 38 cm. • Pelvic 209.25 • Mature wt. 2460 • Mature Scrotal 47 cm.

BEPD	WEPD	Milk	YEPD	\$EN	\$W
+1.1	+2	+27	+13	+18	-3

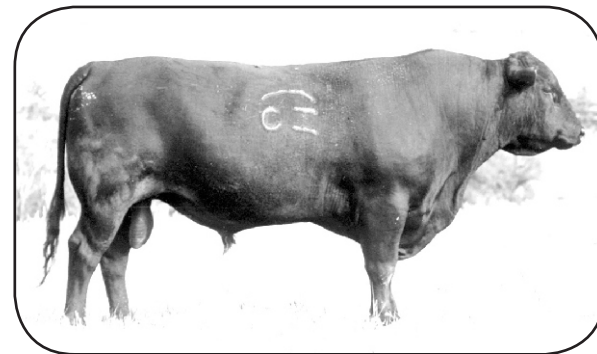


COLE CREEK Q BAR 103T

10877070 • Birth Date: 2/13/86 103T is a heifer bull supreme. We used 103T on our heifers for 3 years in a row and he is the easiest calving bull we've ever used in both weight and conformation. 103T's sire, Basin Q Bar 163 is one of the all time high bulls for total maternal. We bred him to 9 of his daughters with no problems. We really liked his daughters and he's a real cow maker. 103T sired Cole Creek Gold Bar 97V.

NR 103 • GR 111 • YR 106 • 365 wt. 1094
Mature Weight: 2350 lbs • Mature Scrotal: 48 cm.

BEPD	WEPD	Milk	YEPD	\$EN	\$W
-1.9	+3	+18	+7	+32	-1



ZRP INTENSIFIER 0021

11473611 • Birth Date: 2/4/90 We bought this bull out of the Midland Bull Test. Both his great grandmothers are 054 cows. His own dam is a 60E cow who is the sire of Power Play. We used him on all our 97V heifers and cows too. He calved very easy out of our heifers. His daughters have the makeup to be brood cows. 0021 has great length, volume and ease of fleshing. He's everything we hoped he would be. 9 herds with 56 daughters who weaned 242 progeny at 101. Sire of Cole Creek Inciter 253.

NR 106 • GR 115 • YR 107 • 365 wt. 1228 lbs.
Mature Weight: 2505 • Mature Scrotal 46 cm.

BEPD	WEPD	Milk	YEPD	\$EN	\$W
-0.6	+3	+20	+2	+29	-0

HERD BUILDERS



HBR ENCORE 0544

13775588 • Birth Date: 1/26/00 0544 was purchased at Horse Butte. He is a Shoshone Encore 6310 out of an 054 x 977 cross cow. 977 being a maternal brother to 054 sire by Shoshone Viking GD 60. They are strong topped and carry down in the flank really well. They are our biggest framed cows. Some have longer teats, most are real good uddered. The Encore x 0544 daughters are some of my favorite and produce. The female side, (daughters) of 0544 are for real. Encore sired two sons we used, Cole Creek Encore 49N and Cole Creek Not Afraid 7S. He is the sire for the Encore Genetics at Cole Creek. Owned with Horse Butte Ranch.

Shoshone Bob 2712.....
SHOSHONE ENCORE 6310
 Shoshone Frances MHE 63-93.....
 Rito 054 GDAR.....
CAR MISS FOREVER 546
 Lady Viking 131 CAR.....

Shoshone Beauigan JGECA 27
 Shoshone Barbara MGEA 27-55
 Laveron of Wye
 Shoshone Frances HE63
 CSU Rito 4114
 Blackcap Forever 485 GDAR
 Viking 977 GDAR
 Revella 423 of DB

BEPD	WEPD	Milk	YEPD	SEN	SW
+2.9	+33	+24	+51	+11	+30

Yearling Scrotal: 38 cm. • BW 88 • WW 790 NR ET • GR 107 • YR ET
 • 365 Wt. 1136 • Mature SC 45 cm. • Mature Wt 2,150 lbs.



AAR WINDY RIDGE 523

12011716 • Birth Date: 2/7/93 Ridge is a bull we bought from Arntzen's for our heifers. He's really smooth with fleshing ability and thickness. His dam is a Power Lad daughter who is a Montana Power out of the great 054 daughter, Cedar Hills Blackbird 2011. The grand dam being a VDAR Power Play 941 dam. AAR Windy Ridge 523 is a real heifer bull. To date Ridge has 176 calves at 101 Nursing Ratio. Ridge has 45 daughters in 10 herds who weaned 136 calves at 101 ratio. Some of the Ridge daughters have fatter teats when they calve and some udders are perfect. Ridge 523 is now a Pathfinder sire in the Angus breed.

Wards Commodore 7539.....
WINDY RIDGE COMMODORE
 Miss Lost Lake of KHD.....
 GP Power Lad 8242.....
AAR BLACKCAP KAY 1871
 AAR Blackcap Kay 1735.....

Commodore 7518 of Hyline
 Wards Blackbird 2118
 Lost Lake Lodge 2
 Lonepine Miss Revolution
 PJM Power 291
 Cedar Hills Blackbird 2011
 VDAR Power Play 941
 AAR Blackcap Dixie 791

BW 80 • NR 101 • GR 111 • YR 105 • 365 wt. 1187 lbs.
 Yrlg Scrotal 39 cm. • Mature Scrotal 46 cm. • Mature Wt. 2210 lbs.

BEPD	WEPD	Milk	YEPD	SEN	SW
-0.1	+29	+16	+46	+20	+22



COLE CREEK GOLDMERE 31N

14317526 • Birth Date: 2/14/02 A son we kept out of the 1967 model bull, Juanada Goldmere of PJM. Dam was a strong Ridge 523 daughter with 4 NR 105, 3 YR 105. Full brother was second high seller in 2004 selling to Medalen Angus, North Dakota. 31N calves real easy and could be used as a heifer bull. His daughters are excellent uddered with super dispositions. Real feminine range cows. Cole Creek Goldmere 31N is now a Pathfinder Sire.

Juanada Lad of RR 22.....
JUANADA GOLDMERE OF PJM
 Kates Lassie of PJM.....
 AAR Windy Ridge 523.....
COLE CREEK CLOVADA 397
 Cole Creek Clova Juanada 263.....

Juanada Lad of RR 9
 Dixie Blackcap 53
 Goldmere of Moorhead 78
 Kates Lassie of RR
 Windy Ridge Commodore
 AAR Blackcap Kay 1871
 Cole Creek Montana 35X
 Cole Creek Clova Juanada 51W

BEPD	WEPD	Milk	YEPD	SEN	SW
-0.3	+26	+33	+52	-2	+35

BW 78 • NR 104 • GR 125 • YR 114 365 wt. 1229 • Mature SC 45 • Mature wt. 2210



COLE CREEK JUANADA GOLD 92P

14548981 • Birth Date: 2/7/03 Gold 92P was purchased by Keith and Nikki Medalen in North Dakota. 92P is a full brother to Cole Creek Goldmere 31N. We never got Goldmere 31N collected so we bred to 92P. He is a proven calving ease bull. Progeny look good at Cole Creek.

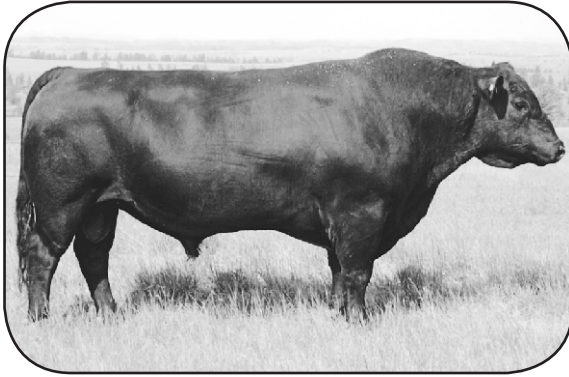
Juanada Lad of RR 22.....
JUANADA GOLDMERE OF PJM
 Kates Lassie of PJM.....
 AAR Windy Ridge 523.....
COLE CREEK CLOVADA 397
 Cole Creek Clova Juanada 263.....

Juanada Lad of RR 9
 Dixie Blackcap 53
 Goldmere of Moorhead 78
 Kates Lassie of RR
 Windy Ridge Commodore
 AAR Blackcap Kay 1871
 Cole Creek Montana 35X
 Cole Creek Clova Juanada 51W

BEPD	WEPD	Milk	YEPD	SEN	SW
+0.2	+22	+20	+40	+18	+18

BW 74 • NR 108 • GR 100 • YR 105 • 365 1084 • Act. Yrlg SC: 37 cm.
 SEN +21.42 • SW +23.82 • MB +10 • RE +29 • SC +96

HERD BUILDERS



14808389 • Birth Date: 2/7/04 We kept Juanada Ridge 95R to carry on Windy Ridge 523. His dam is a Cole Creek Inciter 253 and is a top producer for us. She has 12 NR @ 105 and 10 YR @ 102. He is calving real easy out of heifers. He bred all our heifers natural in 2006 and 2007. The 95R daughters have excellent udders and are good mothers. I want you to notice how 95R's scrotal increases from 39 cm. to 44 cm. and now 46 cm. This, to me, is a sign of fertility and longevity. We are very pleased with the 95R daughters in production. Semen for sale.

COLE CREEK JUANADA RIDGE 95R

Windy Ridge Commodore	Wards Commodore 7539
AAR WINDY RIDGE 523	Miss Lost Lake of KHD
AAR Blackcap Kay 1871	GP Power Lad 8242
	AAR Blackcap Kay 1735
Cole Creek Inciter 253.....	ZRP Intensifier 0021
COLE CREEK EILEEN PRIDE 1259	Cole Creek Juanada 94T
Cole Creek Prides Eileen 97W.....	Cole Creek Oscar 70Q
	Cole Creek Prides Eileen 71P

BEPD	WEPD	Milk	YEPD	\$EN	\$W
+1.9	+20	+26	+31	+13	+20

BW 74 • NR 105 • GR 113 • YR 109 • Mature wt. 2135 • Mature SC 47
365 1142 • Act. SC 39 cm. Act. SC 4/29/06 44 cm. • Act. SC 5/1/07 46 cm.

COLE CREEK BLACK BORE 572

17329105 • Birth Date: 2/19/12 Black Bore 572 was the high selling bull in our 2013 sale to Ginger Hill Angus, Brooke and Ann Miller, of Virginia. Black Bore 572 traces 20 times to Juanada Lad, 650 times to Puck of Wickwire, 125 times to Conan of Wye, 51 times to Fabron of Wye and 10 times to Rito 054. The bulls are moderate and thick and his daughters are looking really good. Semen for sale

Cole Creek Black Cedar 46P	CH Quantum 6247
COLE CREEK FULL BORE 730	Cole Creek Clova Juanada 67
Cole Creek SG Jumboleen 76P	HBR Encore 0544
	Cole Creek Jumboleen 876
Cole Creek Goldmere 31N	Juanada Goldmere of PJM
COLE CREEK JUANADA 92T	Cole Creek Clovada 397
Cole Creek Juanada 32P	CH Quantum 6247
	Cole Creek Juanada 429

BEPD	WEPD	Milk	YEPD	\$EN	\$W
+2.9	+54	+31	+104	-18	+51

BW 82 • NR 114 • GR 113 • YR 114 • 365 Wt. 1123



COLE CREEK BLACK CEDAR 46P

14496765 • Birth Date: 2/16/03 We kept Black Cedar to breed to our heifers. He is a calving ease bull and his calves show excellent performance. You won't find any better daughters than the Black Cedar daughters. Quiet dispositions, excellent udders and the want to be mothers. The Black Cedar cattle are strong topped, easy fleshing, thick butted and moderate framed. Black Cedar is a breeder of grassland cattle. His oldest daughters are now 16 years old and still continue to be strong, solid producing cows. Grassland longevity proven. Black Cedar has become popular through his proven progeny. We have CSS semen for sale on Black Cedar 46P, who is a Pathfinder sire in the breed.

CH Quantum 3330	GDAR Quantum 1245
CH QUANTUM 6247	Dixie Erica of CH 6180
CH Blackbird 0136	GDAR Traveler 584 LT
	CH Blackbird 5028
AAR Windy Ridge 523.....	Windy Ridge Commodore
COLE CREEK CLOVA JUANADA 67	AAR Blackcap Kay 1871
Cole Creek Clova Juanada 811.....	Cole Creek Gold Bar 97V
	Cole Creek Clova Juanada 51W

BEPD	WEPD	Milk	YEPD	\$EN	\$W
+2.2	+46	+21	+82	+2	+49

BW 73 • NR 106 • GR 121 • YR 113 • Adj. 365 1169 • Mature SC 45 • Mature Wt. 2260
Adj. Scan Wt: 1109 • IMF 3.44 • Ribeye 12.4

CH QUANTUM 6247 "Cedar"

12687606 • Birth Date: 2/29/96 Cedar's dam is a long, thick and smooth made female. The grand dam is a really well made Shoshone Intent KGEA 27 with 10 NR 101 and 9 NR 101. The GDAR Traveler 584 LT's are some of the best ever at Cedar Hills. His sire, 3330 is a GDAR Quantum 1245 and also is out of a Shoshone Intent dam who is out of a F0203 dam. CH Quantum 6247 is long and really thick. The double bred Shoshone Intent bull through both Paternal and Maternal grand dams being Shoshone Intent KGEA 27 dams. Cedar has 30 daughters in 7 herds who weaned 62 calves at 101 ratio. Cedar has proved himself as a real heifer bull being bred and calved to over 1000 heifers. His daughters are for real. I will use Cedar just for his daughters alone. They've got the genetic base. Owned with Rick and Paul Hansen Angus and Zane Panasuk Angus. Cedar is now a Pathfinder sire in the Angus breed.

GDAR Quantum 1245	GDAR Centennial 911
CH QUANTUM 3330	GDAR Miss Blackbird 510
Dixie Erica of CH 6180	Shoshone Intent KGEA 27
	Dixie Erica of CH 1019
GDAR Traveler 584 LT	QAS Traveler 23-4
CH BLACKBIRD 0136	Eileenmere Lady 284 GDAR
CH Blackbird 5028	Shoshone Intent KGEA 27
	CH Blackbird 2006

BEPD	WEPD	Milk	YEPD	\$EN	\$W
-2.3	+23	+20	+41	+18	+23

Yrlg. Scrotal 37.5 cm. • BW 86 • WR 103 • GR 112 • YR 107
365 Wt. 1136 • Mature SC 43 cm. • Mature Wt 2,120 lbs.
Carcass EPDs: CW +6 • MB +.10 • Fat -.021 • %RP +.30 • REA +.14

HERD BUILDERS



COLE CREEK BLACK SEAL 488

19242209 • Birth Date: 3/04/18 A bull we kept to carry on Black Seal 1132. Dam is Pathfinder Black Cedar 46P. Gran Dam is again Eileen Pride 1259, Herd Tag 26. Flushing cows into our herd threw sons. Dam - 12 NR@ 104

- | | |
|------------------------------------|------------------------------|
| Cole Creek Black Seal 230 | Cole Creek Black Cedar 46P |
| COLE CREEK BLACK SEAL 1132 | Cole Creek Juanada G 53T |
| Cole Creek 104 Juanada 35V..... | Cole Creek Cedar Jumbo 68R |
| | Cole Creek 104 Juanada 107N |
| | C H Quantum 6247 |
| Cole Creek Black Cedar 46P..... | Cole Creek Clova Juanada 67 |
| COLE CREEK EILEEN PRIDE 99U | Cole Creek Inciter 253 |
| Cole Creek Eileen Pride 1259..... | Cole Creek Prides Eileen 97W |

BEPD	WEPD	Milk	YEPD	\$EN	\$W
+4.6	+32	+27	+55	+10	+30

BW 85 • NR 100 • GR 100 • YR 96 • 365 1018 • 4 YR SC 48



COLE CREEK CEDAR RIDGE 1V

16134394 • Birth Date: 3/5/08 Another outcross bull for the Angus breed. Cedar Ridge 1V is an excellent made Black Cedar 46P son. The dam of Black Cedar is out of our AAR Windy Ridge 523 Pathfinder sire back out of a Gold Bar 97V back to the Rito 054 Pathfinder dam Juanada 51W. Now you go to the dam of Cedar Ridge 1V and she is an HBR Encore 0544 back to a Pathfinder Cedar (CH Quantum 6247) dam. And of course Cedar is also Black Cedar 46P's sire. Then you take the great grand dam and she's out of the same Rito 054 Pathfinder dam as Black Cedar 46P. This calf is really thick and smooth. He is calving out of heifers really well. Owned with Kevin Deitz. Semen for sale through Genex who leases him. Some of his daughters have the longer Encore teats.

- | | |
|-----------------------------------|------------------------------|
| CH Quantum 6247 | CH Quantum 3330 |
| COLE CREEK BLACK CEDAR 46P | CH Blackbird 0136 |
| Cole Creek Clova Juanada 67 | AAR Windy Ridge 523 |
| | Cole Creek Clova Juanada 811 |
| HBR Encore 0544 | Shoshone Encore 6310 |
| COLE CREEK CLOVANADA 49S | CAR Miss Forever 546 |
| Cole Creek Clovanada 709 | CH Quantum 6247 |
| | Cole Creek Clovada 397 |

BEPD	WEPD	Milk	YEPD	\$EN	\$W
-0.7	+41	+32	+72	+10	+69

Dam's Production: 11 NR @ 103 • 9 YR @ 102
BW 67 • WR 114 • GR 114 • YR 114 • 365 1170 • SC 37.5



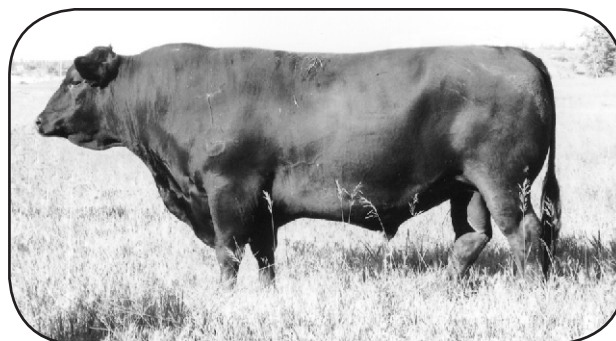
COLE CREEK BLACK CEDAR 1100

16720395 • Birth Date: 2/11/10 Excellent Black Cedar 46P son we kept. Dam is made really good. Excellent in her feet, legs and structure. Perfect udder. She is an ideal grassland cow. Average in her ratios with 13 NR 98 and 8 YR 101. Calving ease Black Cedar son with excellent structure and natural thickness. Excellent heifer bull. Semen for sale. 1100 is now a Pathfinder Sire in the Angus Breed.

- | | |
|------------------------------------|------------------------------|
| CH Quantum 6247 | CH Quantum 3330 |
| COLE CREEK BLACK CEDAR 46P | CH Blackbird 0136 |
| Cole Creek Clova Juanada 67 | AAR Windy Ridge 523 |
| | Cole Creek Clova Juanada 811 |
| HBR Encore 0544 | Shoshone Encore 6310 |
| COLE CREEK JUANADA BIRD 38N | CAR Miss Forever 546 |
| Cole Creek Juanita 311 | Cole Creek Gold Bar 97V |
| | Cole Creek Shonita 146W |

BEPD	WEPD	Milk	YEPD	\$EN	\$W
+1.5	+35	+28	+62	+5	+36

BW 80 • NR 104 • GR 124 • YR 112 • 365 1148 • Mature SC 46 • Mature WT 2,210



COLE CREEK BLACK SEAL 230

16720470 • Birth Date: 3/2/10 Dam of Black Seal 230 is a perfect model cow for the grassland environment. She is a smaller framed cow with an excellent udder and feet. 8 NR 104 and 8 YR 106. She is the dam of Cole Creek Full Juanada 106V, Black Seal's granddam is the grassland model cow pictured on the back of this catalog. Seal is really a smooth made bull. Daughters are great cows. Semen for sale.

- | | |
|-----------------------------------|------------------------------|
| CH Quantum 6247 | CH Quantum 3330 |
| COLE CREEK BLACK CEDAR 46P | CH Blackbird 0136 |
| Cole Creek Clova Juanada 67 | AAR Windy Ridge 523 |
| | Cole Creek Clova Juanada 811 |
| Cole Creek Goldmere 31N | Juanada Goldmere of PJM |
| COLE CREEK JUANADA G 53T | Cole Creek Clovada 397 |
| Cole Creek Juanada G 080..... | Cole Creek Inciter 253 |
| | Cole Creek Juanada G 118W |

BEPD	WEPD	Milk	YEPD	\$EN	\$W
+0.3	+43	+26	+66	+3	+51

BW 75 • NR 107 • GR 111 • YR 109 • Mature SC 48 • Mature Wt 2,395

HERD BUILDERS



COLE CREEK FULL BORE 730

16720408 • Birth Date: 2/15/10 Dam of Full Bore 730 is a solid grassland cow. She is a grassland cow who always raises big calves and performs. She has more bone on good feet. Just one of those cows you would like to have 100 of. She has 10 NR 108 and 8 YR 111. She's one of our bigger Shoshone Encore bred daughters. Full Bore 730 was high selling bull in 2011 sale going to Neiman 77 Ranch, WY, Broken Bar M, NE, Christman Family Cattle, NE, Spring Valley Ranch, NE, Rally Farms, NY and JSK Livestock, NY. We feel this Black Cedar 46P son will produce those deep, thick, broody grassland cows. Sire of Black Bore 572 and Bull Barrel 1353, herd sires at Ginger Hill in VA.

- | | |
|------------------------------------|------------------------------|
| CH Quantum 6247 | CH Quantum 3330 |
| COLE CREEK BLACK CEDAR 46P | CH Blackbird 0136 |
| Cole Creek Clova Juanada 67 | AAR Windy Ridge 523 |
| | Cole Creek Colva Juanada 811 |
| HBR Encore 0544 | Shoshone Encore 6310 |
| COLE CREEK SG JUMBOLEEN 76P | CAR Miss Forever 546 |
| Cole Creek Jumboleen 876 | Cole Creek Tracker 1232 |
| | Cole Creek Jumboleen 233 |

BEPD	WEPD	Milk	YEPD	\$EN	\$W
+2.6	+45	+25	+76	+7	+50

BW 85 • NR 107 • GR 134 • YR 118 • 365 1203 • Act. SC 37 2/28/11



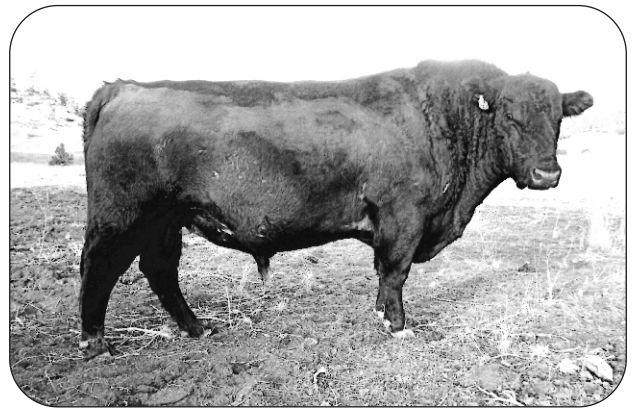
COLE CREEK RIDGE LINE 1243

17622265 • Birth Date: 2/26/13 Ridge Line 1243 is out of Ridge 1340 and what I consider one of the best Juanada 7 daughters we have and have had. His dam, the 240 cow, is excellent in structure with perfect feet. She has 13 calves @ 103 NR. 1243 is a little more outcross for us and we used him on a lot of Black Cedar daughters. Daughters have perfect udders. Owned with Wes Elston and Keith Medalen, ND.

- | | |
|------------------------------------|------------------------------|
| Cole Creek Juanada Ridge 95R | AAR Windy Ridge 523 |
| COLE CREEK RIDGE 1340 | Cole Creek Eileen Pride 1259 |
| Cole Creek Juanadamere 102R | CH Quantum 6247 |
| | Cole Creek Juanadamere 534 |
| Juanada 7 of PJM | Juanada Lad of RR 22 |
| COLE CREEK JUANADA MIST 12T | Bandomere Carol of PJM |
| Cole Creek Juanada Rita 351 | Cole Creek Gold Bar 97V |
| | Cole Creek Juanada Rita |

BEPD	WEPD	Milk	YEPD	\$EN	\$W
+0.1	+22	+18	+29	+25	+21

BW 83 • NR 102 • GR 98 • YR 100 • 365 wt. 1022 • 2/26/14 SC 35 cm.



COLE CREEK SURE BLACK X106

19854869 • Birth Date: 2/26/20 We Bred the heifers to Sure Black X106 for two years. We bunched the River Breaks cows and heifers after first cycle in 2022. This year he went to the cows. Touched one heifer in two years and that was a Head-Feet jam at the ass. Calves are laid in at the shoulders and nice narrow head. His Dam was a full sister to Cole Creek Pure Juanada 679 Herd Bull in catalog and Sire of the Juanada bulls. His Dam 50U had 12 calves at 99 weaning, 12 calves at 97 birth ratio and 12 calves at 365 day calving interval.

- | | |
|-----------------------------------|------------------------------|
| Cole Creek Automatic 1244 | Cole Creek 1100 Automatic |
| COLE CREEK SURE BLACK 1168 | Cole Creek Juanada Rita S |
| Cole Creek Juanada Girl 58V | Cole Creek Juanada Ridge 95R |
| | Cole Creek 7 Of Juanada 28T |
| Cole Creek Black Cedar 46P | C H Quantum 6247 |
| COLE CREEK JUANADACAP 50U | Cole Creek Clova Juanada 67 |
| Cole Creek Juanadacap 134R | Cole Creek Goldmere 31N |
| | Cole Creek Juanada Cap 882 |

BEPD	WEPD	Milk	YEPD	\$EN	\$W
+2.3	+31	+27	+50	+18	+35

BW 67 • NR 102 • GR 89 • YR 96 • 365 955 • YSC 37



COLE CREEK 1322 AUTO 717

18922917 • Birth Date: 2/21/17 717 Bull we kept for a 1100 Automatic son to carry on. Dam is Juanada Gold 92P who is a full brother to Goldmere 31N. Gran Dam is 756 Cedar 475 who traces to Herd Tag 756 cow who was one of our best Rito 054 daughters. Great Gran Dam was the old 43 cow pictured on the back of this catalog who was the perfect model for a grassland cow and lived and produced naturally here till she just wore out at age 18 in a no B.S. grassland environment. Dam - 6 calves at 105 NR

- | | |
|------------------------------------|------------------------------|
| Cole Creek Black Cedar 1100 | Cole Creek Black Cedar 46P |
| COLE CREEK 1100 AUTOMATIC | Cole Creek Juanada Bird 38N |
| Cole Creek Eileen Pride 102W | Cole Creek Juanada Lad 81T |
| | Cole Creek Eileen Pride 1259 |
| Cole Creek Juanada Gold 92P | Juanada Goldmere of P J M |
| COLE CREEK JUANADA G 513 | Cole Creek Clovada 397 |
| Cole Creek Juanada G 48U | Cole Creek 756 Cedar 47S |
| | Cole Creek Juanada G 080 |

BEPD	WEPD	Milk	YEPD	\$EN	\$W
+1.3	+47	+25	+80	-2	+48

BW 80 • NR 115 • GR 108 • YR 111 • 365 1102 • SC 38.5 • 5Yr SC 49

HERD BUILDERS



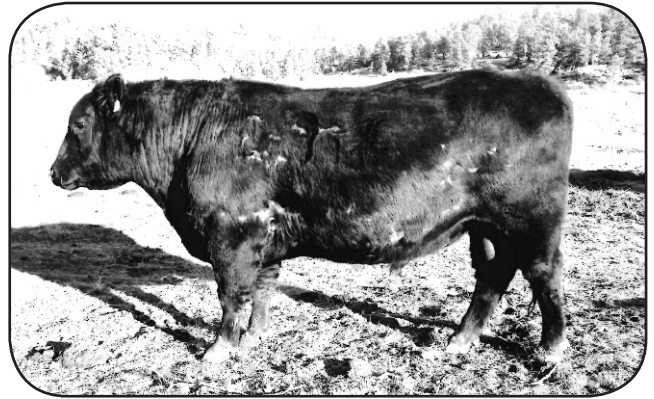
COLE CREEK AUTOMATIC 1244

17935790 • Birth Date: 2/18/14 1244 was injured at clipping in the sale that year. We kept him and he is a really thick level topped bull. Excellent feet and structure. We used him hard in 2017. Bulls are masculine and the daughters look good. His dam is the Pathfinder 220 cow and 14 calves @ 102 NR and gentle as they come. All who have seen 1244 love his ability to flesh and natural muscling he maintains in a true brown grass range environment.

- | | |
|------------------------------------|------------------------------|
| Cole Creek Black Cedar 1100 | Cole Creek Black Cedar 46P |
| COLE CREEK 1100 AUTOMATIC | Cole Creek Juanada Bird 38N |
| Cole Creek Eileen Pride 102W | Cole Creek Juanada Lad 81T |
| | Cole Creek Eileen Pride 1259 |
| Cole Creek Black Cedar 46P | CH Quantum 6247 |
| COLE CREEK JUANADA RITA S | Cole Creek Clova Juanada 67 |
| Cole Creek Juanada Rita 10P | HBR Encore 0544 |
| | Cole Creek Juanada Rita 1064 |

BEPD	WEPD	Milk	YEPD	\$EN	\$W
+1.3	+36	+26	+63	+3	+39

BW 77 • NR 101 • GR 119 • YR 108 • Mature Wt 2,165 • Mature SC 47



J MC 1841 OF 5339 "JACK"

20535026 • Birth Date: 4/02/21 Black Seal 488 Herd Bull tore his dick about half way thru the breeding season. Called Jack McNamee and told him I needed a bull. J MC 1841 of 5339 was my pick. Seen the Cole Creek 1100 Black 1272 Dams at Jack's and they are good. Liked the Dam and Gran Dam. Gran Dam goes back to Basin Q Bar 163 who was a maternal Bull Wayne Stevenson raised and we used. All the rest of 1841 "JACK" is Jask's Line Bred Shosohne, Horse Butte, Wye Genetics. "JACK" has excellent feet and a great disposition. He will look you up for a scratch on the head, ass or where ever you want to go.

- | | |
|----------------------------------|-----------------------------|
| Cole Creek 1100 Black 1272 | Cole Creek Black Cedar 1100 |
| J MC 5339 OF 1272 | Cole Creek Juanada G 48U |
| J MC True Bess 3841 | J MC 0832 OF 7013 |
| | J MC True Bess 8152 |
| J MC 5504 OF 313 | Horse Butte Beetseed 313 |
| J MC SWEET SARAH 8630 | J MC Lassie 5809 |
| J MC Sweet Sarah 6620 | J MC Q-Bqr 2163 OF 6613 |
| | J MC Sweet Sarah 6832 |

BEPD	WEPD	Milk	YEPD	\$EN	\$W
+0.2	+25	+19	+42	+22	NA



COLE CREEK 1100 AUTOMATIC

17329135 • Birth Date: 2/22/12 Super nice Black Cedar 1100 son purchased by Wes Elston and Kraig Burtchill of North Dakota. Calves have balance and are really black. 1100 Automatic traces 29 times to Juanada Lad. Automatic is calving ease with natural thickness and his offspring have a beautiful pattern. He has been bred to heifers with great results. Semen for sale.

- | | |
|-------------------------------------|------------------------------|
| Cole Creek Black Cedar 46P | CH Quantum 6247 |
| COLE CREEK BLACK CEDAR 1100 | Cole Creek Clova Juanada 67 |
| Cole Creek Juanada Bird 38N | HBR Encore 0544 |
| | Cole Creek Juanita 311 |
| Cole Creek Juanada Lad 81T | Juanada 7 of PJM |
| COLE CREEK EILEEN PRIDE 102W | Cole Creek Juanadamere 34N |
| Cole Creek Eileen Pride 1259 | Cole Creek Inciter 253 |
| | Cole Creek Prides Eileen 97W |

BEPD	WEPD	Milk	YEPD	\$EN	\$W
+0.4	+42	+29	+66	+1	+53

BW 62 • NR 119 • GR 107 • YR 114 • 365 Wt. 1123



COLE CREEK BLACK SEAL 1132

17329120 • Birth Date: 4/8/12 1132 is a late calf that we kept. He's really thick. The Black Seal daughters are really nice first calf heifers with exceptional udders. 1132 is double bred Cedar, Quantum 6247, out of a Quantum granddam. This calf traces 24 times to Juanada Lad. 1132 is nice in a level top line and has natural thickness. Excellent footed bull. Natural sire at Cole Creek.

- | | |
|-----------------------------------|-----------------------------|
| Cole Creek Black Cedar 46P | CH Quantum 6247 |
| COLE CREEK BLACK SEAL 230 | Cole Creek Clova Juanada 67 |
| Cole Creek Juanada G 53T | Cole Creek Goldmere 31N |
| | Cole Creek Juanada G 080 |
| Cole Creek Cedar Jumbo 68R | CH Quantum 6247 |
| COLE CREEK 104 JUANADA 35V | Cole Creek Jumbolen 233 |
| Cole Creek 104 Juanada 107N | CH Quantum 3330 |
| | Cole Creek 104 Juanada 1256 |

BEPD	WEPD	Milk	YEPD	\$EN	\$W
+1.2	+32	+22	+52	+12	+31

BW 75 • NR 104 • Too young for test • 3 Yr Old SC 49 cm.

**AT COLE CREEK, JUANADA
ISN'T JUST A NAME,
IT'S GENETICS IN THE
FOREFRONT OF OUR PROGRAM.**



**Cole Creek Angus-
Mainly Mulies**

We Raise Cattle.

We Hunt.

We Kill.

We are Eaters of Meat.

We are Proud of IT!

**We Enjoy and Love Every
Bite!**

**We are Still Hard Working,
Free Americans!**

**Why? Because it's a
God Given Right!**

COLE CREEK ANGUS RANCH

**PERFORMANCE RAISED
PERFORMANCE PROVEN**



*Cole
Creek Angus Ranch*
MATERNAL PERFORMANCE

BLACK CEDAR 46P DAUGHTERS



HERD TAG: 804 • PATHFINDER RITO 054

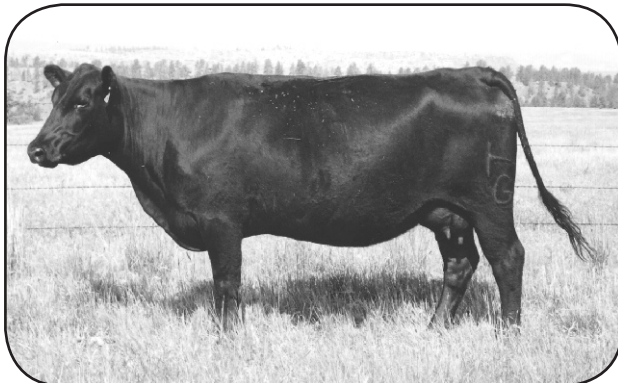
MATERNAL FOUNDATION FOR COLE CREEK **BLACK CEDAR**

46P, COLE CREEK GOLDMERE 31N, COLE CREEK

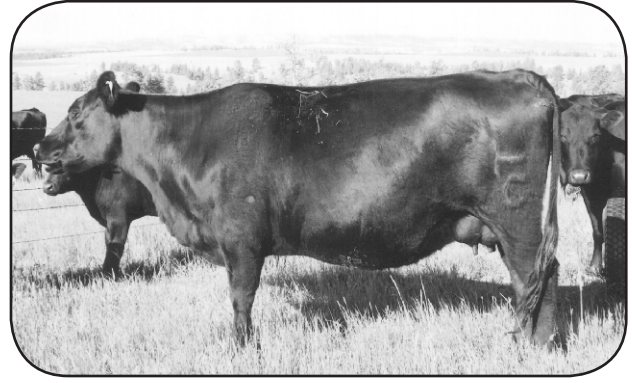
JUANADA GOLD 92P, COLE CREEK SEVEN SON 67T,

COLE CREEK GOLDMERE 70VAND

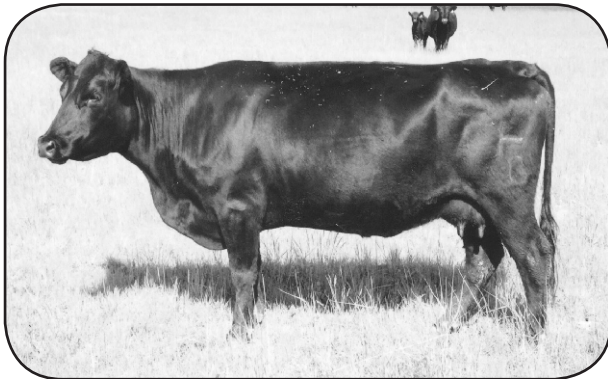
COLE CREEK CEDAR RIDGE IV.



HERD TAG: 220 • 7 YEAR OLD PATHFINDER 46P DAUGHTER



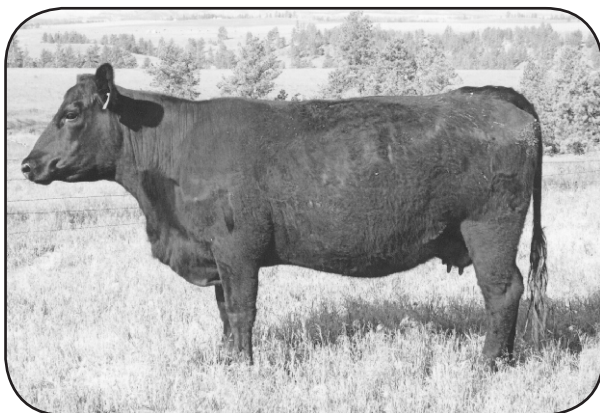
HERD TAG: 228 • SEVEN YEAR OLD 46P DAUGHTER



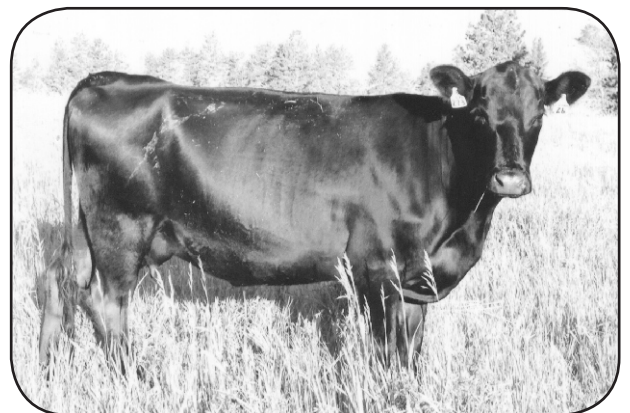
HERD TAG: 230 • 7 YEAR OLD 46P DAUGHTER



HERD TAG: 268 • SIX YEAR OLD 46P DAUGHTER



HERD TAG: 257 • FOUR YEAR OLD 46P DAUGHTER



HERD TAG: 273 • Two year old 46P daughter



We tested 49 bulls for an average daily gain of 2.54 for 148 days. These bulls are grown out to be range bulls not slaughter steers. Our cattle are pushed to harvest grass in the world of efficiency, no creep feeders, no tubs when the grass dries out, no supplement feed. Preconditioned calves September 15th. The bulls average 205 day wt. was 575 pounds. Extreme drought with a million grasshoppers. Cows went back out until December. Calves were out from May 1st to October 13th when we weaned. Extreme year of grasshoppers.

You know, a lot of cattle do good in the lazy, not want for anything environment but when put to the test in a true grassland environment where they have to travel, work and stress comes into play simply for the fact of the lack of, they fall apart. Simply put, when the going gets tough, the efficient cattle keep going.

Scrotal circumferences are actual, taken 3/8/24 with a tight tape. Bulls have to pass a complete exam of the glands at the bottom of the testicles and inside the rectum. A probe is inserted and bull is made to extend, and semen collected and he has to pass under a microscope, free of puss, abnormalities and have good swimmers. You might want to ask breeders what a breeding soundness exam consists of. It better be more than grabbing the bulls nuts and telling him to bend over and cough and say "He Looks Good". Rest assured, all Cole Creek bulls have passed the torture chamber. Good nuts, good glands, a penis that can extend and good semen. There's no such thing as a "He Should Be OK Bull". The breeders that put the borderline to flunking bulls in their sale because they are some of their best, where's your conscience? The bull passed or he failed. Black and white. There's no gray matter in bull fertility. Tested negative for BVD P1. Scrotal Circumferences available at sale of after March 15th.

This herd is the Juanada line back through A.I. and then use sons out of the old blood. At Cole Creek, Juanada isn't just a name, it's genetics in the front of our program. The Juanada cattle have proven to be the best, not in 90 days, but 50 years! The Juanada cattle will add efficiency and maternal to the high growth terminal carcass lines as well as add value to the Ohlde (6807) and Shoshone (Wye) line of cattle.

1. I will deliver bulls for 250 miles on purchases of \$7,000 or more, the rest of milage at actual cost. And other deliveries at cost. 2. You haul within a few days of sale and I'll discount \$25 a head, or 3. I'll pay feed until May 1st. After May 1st, bulls need to be out or you make arrangements with Midland Bull Test.

In this day of A.I. and the saturation of the gene pool in the Angus breed, we chose to stay the course. This herd is free of genetic defests. We dedicate ourselves to try to preserve genetics that made Angus, Angus. Fresh new genetics from old proven lines for the saturation of the Angus gene pool.

All lot numbers are the same number of our herd tags. So, if you bought Lot 26 bull ten years ago, Lot 26 this year is out of the same dam. Heifers receive a new herd number when they enter our herd and keep it for life so all her calves carry the same number.



04 COLE CREEK 523 CEDAR U106

Calved: 2/24/23 20778728

Cole Creek 1322 Auto 717

COLE CREEK 523 CEDAR W107

Cole Creek Juanada Bird 224

Cole Creek Juanada Gold 92P

COLE CREEK EILEEN PRIDE 72

Cole Creek Eileen Pride 99U

Cole Creek 1100 Automatic
 Cole Creek Juanada G 513
 Cole Creek Black Seal 230
 Cole Creek Juanada Bird 38N
 Juanada Goldmere OF P J M
 Cole Creek Clovada 397
 Cole Creek Black Cedar 46P
 Cole Creek Eileen Pride 1259

EPDS

BW +2.7
 WW +26
 MK +27
 YW +57

\$EN +11

\$W +23

Dam's Production: 10 NR @ 96

BW	NR	GR	YR	365	SC
80	87	122	102	1004	

Solid thick Cedar W107 Son. Dam is a thick Gold 92P daughter. She is 12 years old and is solid like she was 5. Gran Dam was Pathfinder Black Cedar 46P with Great Gran Dam being the Pathfinder Tag 26 cow, Eileen Pride 1259.

05 COLE CREEK PURE JUANADA U103

Calved: 2/27/23 20778752

Juanada 7 OF P J M

COLE CREEK PURE JUANADA 679

Cole Creek Juanadacap 1201

Cole Creek Black Seal 230

COLE CREEK JUANADAMERE 162

Cole Creek Juanamere 71T

Juanada Lad OF R R 22
 Bandomere Carol OF P J M
 Cole Creek Black Cedar 46P
 Cole Creek Juanadcap 134R
 Cole Creek Black Cedar 46P
 Cole Creek Juanada G 53T
 Cole Creek Cut A Track 46M
 Cole Creek Juanamere 91N

EPDS

BW -0.4
 WW +35
 MK +29
 YW +54

\$EN +13

\$W +44

Dam's Production: 10 NR @ 106

BW	NR	GR	YR	365	SC
70	99	94	97	956	

Dam is Pathfinder Black Seal 230. Still going strong at 12 years old. Never missed in a true dryland grass environment. Sire is Pure Juanada 679 and is thick, great feet and a strong level top line. We can't stand the broke back mountain behind the shoulders with the sway back high tail head ugly cattle. Come to the ranch and we will show you dryland functional maternal, heifer bull.

07 COLE CREEK 523 CEDAR U84

Calved: 3/03/23 20778799

Cole Creek 1322 Auto 717

COLE CREEK 523 CEDAR W107

Cole Creek Juanada Bird 224

Cole Creek Juanada Gold 92P

COLE CREEK MISS JUANADA 172

Cole Creek Juanad 102P

Cole Creek 1100 Automatic
 Cole Creek Juanada G 513
 Cole Creek Black Seal 230
 Cole Creek Juanad Bird 38N
 Cole Creek Goldmere OF P J M
 Cole Creek Clovada 397
 C H Quantum 6247
 Cole Creek Juanadaleen 027

EPDS

BW +0.4
 WW +25
 MK +30
 YW +52

\$EN +11

\$W +29

Dam's Production: 9 NR @ 98

BW	NR	GR	YR	365	SC
75	91	114	101	989	

Nice Heifer bull out of a Pathfinder Juanada Gold 92P Dam. Gran Dam was Pathfinder "Cedar" Quantum 6247. Great Gran Dam was also Pathfinder as well as the Great Great Gran Dam. The definition of functional fertility all done in a rugged dry grassland environment where cattle have to travel to harvest grass. Those 4 Dams raised 43 calves with 07's Dam still going.

010 COLE CREEK 523 CEDAR U73

Calved: 3/04/23 20778800

Cole Creek 1322 Auto 717

COLE CREEK 523 CEDAR W107

Cole Creek Juanada Bird 224

Cole Creek Juanada Gold 92P

COLE CREEK JUMBOLEEN 22

Cole Creek S G Jumboleen 22S

Cole Creek 1100 Automatic
 Cole Creek Juanada G 513
 Cole Creek Black Seal 230
 Cole Creek Juanad Bird 38N
 Cole Creek Goldmere OF P J M
 Cole Creek Clovada 397
 Cole Creek Black Cedar 46P
 Cole Creek S G Jumboleen 76P

EPDS

BW +0.8
 WW +32
 MK +31
 YW +63

\$EN +4

\$W +37

Dam's Production: 9 NR @ 105

BW	NR	GR	YR	365	SC
76	103	101	102	1003	

Nice thick Cedar W107 out of a thick made Pathfinder Juanada Gold 92P Dam. Again, Gran Dam and Great Gran Dam were also Pathfinder. Gran Dam had 12 calves at 104 nursing. Great Gran Dam had 14 calves at 100 nursing. Longevity has to proven. Without functional fertility, longevity doesn't exist. We are providing longevity and fertility so you will not have that 20-30 percent open cows. Genetics with the ability to cycle and get bred in a low input grassland environment.

011 COLE CREEK 1272 JACK U79

Calved: 03/03/23 20778801

J MC 5339 OF 1272

J MC 1841 OF 5339

J MC Sweet Sarah 8630

Cole Creek Cedar Ridge 1V

COLE CREEK JUANADACAP 262

Cole Creek Juanadacap 42P

Cole Creek 1100 Black 1272
 J MC True Bess 3841
 J MC 5504 OF 313
 J MC Sweet Sarah 6620
 Cole Creek Black Cedar 46P
 Cole Creek Clovanada 49S
 HBR Encore 0544
 Cole Creek Juanada Cap 882

EPDS

BW +0.7
 WW +26
 MK +24
 YW +44

\$EN +20

\$W +28

Dam's Production: 10 NR @ 96

BW	NR	GR	YR	365	SC
76	94	97	95	936	

Heifer bull out of "Jack", J MC 1841 of 5339. Dam is an old Cedar Ridge 1U daughter.

016 COLE CREEK PURE JUANADA U46

Calved: 2/26/23 20778754

Juanada 7 OF P J M

COLE CREEK PURE JUANADA 679

Cole Creek Juanadacap 1201

Cole Creek Black Cedar 1100

COLE CREEK S G JUMBOLEEN 882

Cole Creek S G Jumboleen 3V

Juanada Lad of R R 22
 Bandomere Carol of P J M
 Cole Creek Black Cedar 46P
 Cole Creek Juanadcap 134R
 Cole Creek Black Cedar 46P
 Cole Creek Juanada Bird 38N
 Cole Creek Juanada Lad 81T
 Cole Creek S G Jumboleen 22S

EPDS

BW +2
 WW +38
 MK +29
 YW +66

\$EN +9

\$W +41

Dam's Production: 9 NR @ 107

BW	NR	GR	YR	365	SC
76	109	97	104	1018	

Pure Juanada son out of one of my favorite Black Cedar 1100 cows. Dam is Pathfinder. Gran Dam is Pathfinder and my favorite Juanada Lad 81T daughters who has bull 717 in sale. She, 717 has 13 calves at 108 wean ratio with a calving interval of 363 days. Lot 016 is double bred Juanada 7, double bred Black Cedar 46P up front.

Retaining 1/2 semen revenue share.



026

COLE CREEK BEN FORKIN U63

Calved: 2/12/23

20778802

Loyning Forkin 92
LOYNING 92 FORKIN 1127
Loyning Ester 8008

Shoshone Viking Gd60
Shoshone Frances 6306
Horse Butte 6164 OF 3141
Jad Ester 3750
Cole Creek Juanada Ridge 95R
Cole Creek Juanadamere 102R
Cole Creek Black Cedar 46P
JJJ Juanadamere 5207

EPDS

BW +1.1
WW +31
MK +23
YW +45

Cole Creek Ridge 1340
COLE CREEK JAUANADMERE 1203
Cole Creek Juanadamere 108V

Dam's Production: 8 NR @ 97

BW	NR	GR	YR	365	SC
70	101	96	99	970	

\$EN +19
\$W +34

We have a few Forkin 1127 sons and daughters. Dam is Moderate, thick made with excellent udder and feet. We do not tolerate bad feet or udders. Come and take a look. There are to many bad fett, bad uddered cattle in the Angus breed. If you trim feet, you have a problem. Some breeders are not one eye blind, they must be two eye blind and don't look for function. They must not be able to see past the numbers on paper.

037

COLE CREEK PURE JUANADA U3

Calved: 3/08/23

20778756

Juanada 7 of P J M
COLE CREEK PURE JUANADA 679
Cole Creek Juanadacap 1201

Juanada Lad of R R 22
Bandomere Carol of P J M
Cole Creek Black Cedar 46P
Cole Creek Juanadacap 134R
Cole Creek Black Cedar 46P
Cole Creek S G Jumboleen 76P
Cole Creek Goldmere 31N
Cole Creek Juanada G 080

EPDS

BW -0.9
WW +32
MK +30
YW +54

Cole Creek Full Bore 730
COLE CREEK JUANADA G 33
Cole Creek Juanada G 132R

Dam's Production: 9 NR @ 107

BW	NR	GR	YR	365	SC
65	106	113	109	1070	

\$EN +14
\$W +42

Real nice Full Bore 730 Dam of this Pure Juanada son. We are raising genetics for the grassland commercial herds. Genetics to make efficient cows, right in size with above milk to raise good calves. You want more weaning, terminal cross, just don't keep any of the heifers for replacements. Don't outsize your genetics out of your environment, or you'll become a feeder instead of a breeder to maintain your cows.

039

COLE CREEK 523 CEDAR U82

Calved: 3/19/23

20778803

Cole Creek 1322 Auto 717
COLE CREEK 523 CEDAR W107
Cole Creek Juanada Bird 224

Cole Creek 1100 Automatic
Cole Creek Juanada G 513
Cole Creek Black Seal 230
Cole Creek Juanada Bird 38N
Cole Creek Black Cedar 46P
Cole Creek Juanada G 53T
Cole Creek Black Cedar 46P
Cole Creek S G Jumboleen 76P

EPDS

BW +1.1
WW +37
MK +30
YW +70

Cole Creek Black Seal 230
COLE CREEK J JUMBOLEEN 593
Cole Creek S G Jumboleen 22S

Dam's Production: 9 NR @ 100

BW	NR	GR	YR	365	SC
74	104	97	101	992	

\$EN +7
\$W +41

The Dam of Cedar W107 is Black Seal 230. The Dam of Lot 039 is Black Seal 230. Dam is double bred Black Cedar 46P. We are line breeding like the deer, elk, antelope and so on. To create the Cole Creek Angus line of genetics.

041

COLE CREEK PURE JUANADA U76

Calved: 02/14/23

20778757

Juanada 7 OF P J M
COLE CREEK PURE JUANADA 679
Cole Creek Juanadacap 1201

Juanada Lad OF R R 22
Bandomere Carol OF P J M
Cole Creel Black edar 46P
Cole Creel Juanadacap 134R
Cole Creek Black Cedar 46P
Cole Creek Juanada Bird 38N
Cole Creek Black Cedar 46P
Cole Creek Juanada Rita 86R

EPDS

BW +1.6
WW +34
MK +25
YW +56

Cole Creek Black Cedar 1100
COLE CREEK JUANADA RITA 653
Cole Creek Juanada Rita 54T

Dam's Production: 9 NR @ 98

BW	NR	GR	YR	365	SC
79	100	108	104	1021	

\$EN +18
\$W +35

Really nice made Pure Juanada son out of a Black Cedar 1100 Dam. Triple bred Black Cedar 46P with Juanada 7 on top. There is more Juanada in this bull then kernels on a corn cob. Line them up so you reap the Heteroecious and create functional maternal cows. There are a lot of breeders who talk about cows but with there terminal numbers are really saying there genetics will do this if you feed them enough.

042

COLE CREEK PURE JUANADA U107

Calved: 3/13/23

20778758

Juanada 7 OF P J M
COLE CREEK PURE JUANADA 679
Cole Creek Juanadacap 1201

Juanada Lad OF R R 22
Bandomere Carol OF P J M
Cole Creek Black Cedar 46P
Cole Creek Jauanadacap 134R
Cole Creek Seven Son 67T
Cole Creek Clova Juanada 80T
Cole Creek Juanada Ridge 95R
Cole Creek Juanadaleen 96R

EPDS

BW +0.9
WW +28
MK +25
YW +49

Cole Creek Seven Black 311
COLE CREEK ZG JUANADA 1363
Cole Creek Juanadaleen 25U

Dam's Production: 8 NR @ 99

BW	NR	GR	YR	365	SC
75	89	118	101	997	

\$EN +16
\$W +31

Pure Juanada 679 son out of a moderate thick made range cow. Really good feet with nice level top line. We are dedicated and always breeding for function.



HERD TAG: 016 • Cole Creek SG Jumboleen 882



301 COLE CREEK 523 CEDAR U81

Calved: 3/06/23

20778806

Cole Creek 1322 Auto 717
COLE CREEK 523 CEDAR W107
 Cole Creek Juanada Bird 224

Cole Creek Juanada Gold 993
COLE CREEK JUANADA GIRL 81
 Cole Creek Juanada Girl 62U

Cole Creek 1100 Automatic
 Cole Creek Juanada G 513
 Cole Creek Black Seal 230
 Cole Creek Juanada Bird 38N
 Cole Creek Juanada Gold 92P
 Cole Creek Juanada 102P
 Cole Creek Juanada Ridge 95R
 Cole Creek Juanada Rita 655

EPDS

BW +2.3
 WW +28
 MK +31
 YW +57

\$EN +10
 \$W +30

Dam's Production: 4 NR @ 98

BW	NR	GR	YR	365	SC
82	96	111	103	1005	

Dam is thick moderate cow. The Juanada Gold 993 daughters have real good udders and feet. Gran Dam is Juanada Ridge 95R who was out of the 26 cow, Eileen Pride 1259, and she is in a lot of our genetics. The 26 cow left with 12 calves at 105 nursing ratio and 13 calves at 364 calving interval.



HERD TAG: 26 • COLE CREEK EILEEN PRIDE 1259

304 COLE CREEK SURE BLACK U108

Calved: 3/11/23

20778807

Cole Creek Sure Black 1168
COLE CREEK SURE BLACK X106
 Cole Creek Juanadacap 50U

Cole Creek Black Cedar 46P
COLE CREEK JUANADACAP 738
 Cole Creek Juanadacap 1004

Cole Creek Automatic 1244
 Cole Creek Juanada Girl 58V
 Cole Creek Black Cedar 46P
 Cole Creek Juanitacac 134R
 C H Quantum 6247
 Cole Creek Clova Juanada 67
 Cole Creek Tequila 131
 Cole Creek Juanadacap 32S

EPDS

BW +2.6
 WW +33
 MK +28
 YW +58

\$EN +15
 \$W +34

Dam's Production: 4 NR @ 105

BW	NR	GR	YR	365	SC
77	91	115	101	997	

Nice Sure Black X106 out of a young Black Cedar 46P Dam. Gran Dam was Tequila 131. Tequila 131 cows are thick with good feet and udders. We bred 304's Sire, X106, to the heifer for 2 years and touched one calf that was a nose feet jam at the ass.

305 COLE CREEK BLACK SEAL U36

Calved: 02/17/23

20778808

Cole Creek Black Seal 1132
COLE CREEK BLACK SEAL 488
 Cole Creek Eileen Pride 99U

Cole Creek Black Cedar 46P
COLE CREEK SG JUMBOLEEN 548
 Cole Creek SG Jumbolen 5P

Cole Creek Black Seal 230
 Cole Creek 104 Juanada 35V
 Cole Creek Black Cedar 46P
 Cole Creek Eileen Pride 1259
 C H Quantum 6247
 Cole Creek Clova Juanada 67
 HBR Encore 0544
 Cole Creek Jumbolen 233

EPDS

BW +3.3
 WW +35
 MK +26
 YW +62

\$EN +15
 \$W +30

Dam's Production: 4 NR @ 98

BW	NR	GR	YR	365	SC
83	103	104	104	1018	

Black Seal 488 son out of a young Black Cedar 46P cow. Black Seal 488's Dam was Black Cedar 46P and again out of the 26 cow, Eileen Pride 1259. There is a little more birth weight with the Black Seal cattle. Nice calf.

313 COLE CREEK 1272 JACK U38

Calved: 3/08/23

20778809

J MC 5339 OF 1272
J MC 1841 OF 5339
 J MC Sweet Sarah 8630

Cole Creek Black Seal 1132
COLE CREEK SG JUMBOLEEN 298
 Cole Creek S G Jumbolen 691

Cole Creek 1100 Black 1272
 J MC True Bess 3841
 J MC 5504 OF 313
 J MC Sweet Sarah 6620
 Cole Creek Black Seal 230
 Cole Creek 104 Juanada 35V
 Cole Creek Goldmere 70V
 Cole Creek S G Jumbolen 3V

EPDS

BW +0.6
 WW +29
 MK +20
 YW +48

\$EN +21
 \$W +28

Dam's Production: 3 NR @ 77

BW	NR	GR	YR	365	SC
68	89	98	93	913	

Dam is moderate and thick with a perfect udder. Here's a Black Seal cow with calving ease with 3 calves at 66 pound average. This is our first "Jack" calf. We like them and love the functional make up and disposition of J MC 1841 of 5339, "Jack".

317 COLE CREEK 523 CEDAR U51

Calved: 3/18/23

20778810

Cole Creek 1322 Auto 717
COLE CREEK 523 CEDAR W107
 Cole Creek Juanada Bird 224

Cole Creek Automatic 1244
COLE CREEK JUANADA G 918
 Cole Creek Juanada G 15W

Cole Creek 1100 Automatic
 Cole Creek Juanada G 513
 Cole Creek Black Seal 230
 Cole Creek Juanada Bird 38N
 Cole Creek 1100 Automatic
 Cole Creek Juanada Rita S
 Cole Creek Juanada Lad 81T
 Cole Creek Juanada G 53T

EPDS

BW +1.3
 WW +34
 MK +30
 YW +64

\$EN +8
 \$W +37

Dam's Production: 4 NR @ 94

BW	NR	GR	YR	365	SC
75	103	107	105	1028	

Really good Cedar V107 calf. Dam is Black Cedar 1100 threw 1100 Automatic. Gran Dam Juanada Lad 81T. Great Gran Dam is Juanada Goldmere 31N and she is the mother of Black Seal 230 herd bull in catalog. Dam of Lot 317's sire, Cedar W107, is also Black Seal 230.



324 COLE CREEK BLACK SEAL U22

Calved: 2/27/23

20778811

Cole Creek Black Seal 1132
COLE CREEK BLACK SEAL 488
 Cole Creek Eileen Pride 99U

Cole Creek 7 Black 1135
COLE CREEK MISS JUANADA 939
 Cole Creek Miss Juanada 616

Cole Creek Black Seal 230
 Cole Creek 104 Juanada 35V
 Cole Creek Black Cedar 46P
 Cole Creek Eileen Pride 1259
 Cole Creek Seven Black 973
 Cole Creek Juanada G33
 Cole Creek 1100 Automatic
 Cole Creek Miss Juanada 172

EPDS

BW +1
 WW +30
 MK +30
 YW +50

\$EN +14
 \$W +39

Dam's Production: 3 NR @ 103

BW	NR	GR	YR	365	SC
72	90	104	96	944	

Nice Seal 488 out of a moderate hard working 7 Black 1135 Dam. Look at our E.P.D.'s, weaning in the +30, yearling in the +50's. That is moderate 1100 to 1300 pound cows. Milk is 27-31 which is plenty. That's the right size to create the efficient Black lawn mowers for the rugged dry grassland and then use your common sense vision for feet, udders and structure. Turn the light on!

337 COLE CREEK SURE BLACK U15

Calved: 3/19/23

20778812

Cole Creek Sure Black 1168
COLE CREEK SURE BLACK X106
 Cole Creek Juanadacap 50U

Cole Creek 1322 Auto 717
COLE CREEK JUANADA G 869
 Cole Creek Juanada G 873

Cole Creek Automatic 1244
 Cole Creek Juanada Girl 58V
 Cole Creek Black Cedar 46P
 Cole Creek Juanadacap 134R
 Cole Creek 1100 Automatic
 Cole Creek Juanada G 513
 Cole Creek Seven Son 67T
 Cole Creek Juanada G 53T

EPDS

BW +1.6
 WW +37
 MK +29
 YW +65

\$EN +12
 \$W +40

Dam's Production: 3 NR @ 104

BW	NR	GR	YR	365	SC
77	105	102	104	1018	

Nice Sure Black X106 out of a really good Auto 717 Dam. Gran Dam was a Seven Son 67T Sired by Juanada 7 born in 1969. This calf has a patch of white in front of his nuts. He will make range cows.

343 COLE CREEK 1272 JACK U101

Calved: 3/02/23

20778813

J MC 5339 OF 1272
J MC 1841 OF 5339
 J MC Sweet Sarah 8630

Cole Creek 1322 Auto 717
COLE CREEK JUANADA G X114
 Cole Creek Juanada G 220

Cole Creek 1100 Black 1272
 J MC True Bess 3841
 J MC 5504 OF 313
 J MC Sweet Sarah 6620
 Cole Creek 1100 Automatic
 Cole Creek Juanada G 513
 Cole Creek Black Cedar 46P
 Cole Creek Juanada G 132R

EPDS

BW +1.1
 WW +28
 MK +25
 YW +50

\$EN +18
 \$W +30

Dam's Production: 2 NR @ 101

BW	NR	GR	YR	365	SC
75	91	104	96	946	

On the Dam's side both Sires go to Black Cedar 46P and both Dams go to Juanada Goldmere. This is the Cole Creek Angus line. Sire "Jack" is Cole Creek 1100 Black 1272. We will bring in outside genetics but they come from breeders with the same commitment to produce grassland efficient range cows. Because I am not going to be a slave to maintain genetics of outside Black Elephants of the Angus breed.

345 COLE CREEK 523 CEDAR U29

Calved: 4/07/23

20778814

Cole Creek 1322 Auto 717
COLE CREEK 523 CEDAR W107
 Cole Creek Juanada Bird 224

Cole Creek 1322 Auto 717
COLE CREEK JUANADA GIRL X36
 Cole Creek Juanada Girl 62U

Cole Creek Automatic 1244
 Cole Creek Juanada G 513
 Cole Creek Black Seal 230
 Cole Creek Juanada Bird 38N
 Cole Creek 1100 Automatic
 Cole Creek Juanada G 513
 Cole Creek Juanada Ridge 95R
 Cole Creek Juanada Rita 65S

EPDS

BW +0.1
 WW +38
 MK +32
 YW +69

\$EN +1
 \$W +44

Dam's Production: 2 NR @ 108

BW	NR	GR	YR	365	SC
65	114	Too Young To Test			

There are a few too young for test bulls and heifers in the sale. All that is that they were too young to calculate by the American Angus Association. Good Cedar W107 heifer bull out of an Auto 717 Dam.

348 COLE CREEK 1272 JACK U35

Calved: 3/16/23

20778815

J MC 5339 OF 1272
J MC 1841 OF 5339
 J MC Sweet Sarah 8630

Cole Creek 1322 Auto 717
COLE CREEK JUANADA RITA X107
 Cole Creek Juanada Rita 1271

Cole Creek 1100 Black 1272
 J MC True Bess 3841
 J MC 5504 OF 313
 J MC Sweet Sarah 6620
 Cole Creek 1100 Automatic
 Cole Creek Juanada G 513
 Cole Creek Full Juanada 106V
 Cole Creek Juanada Rita 120P

EPDS

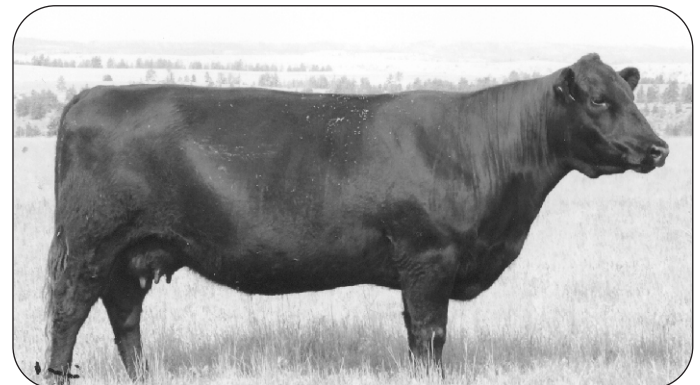
BW +1.8
 WW +40
 MK +25
 YW +67

\$EN +14
 \$W +40

Dam's Production: 2 NR @ 106

BW	NR	GR	YR	365	SC
75	113	111	112	1102	

Super nice "Jack" son out of a really good Auto 717 cow. Gran Dam is Full Juanada out of the old 150 cow, Juanada Rita 120P.



HERD TAG: 150 • Cole Creek Juanada Rita 120P

Retaining 1/2 semen revenue share.



349 COLE CREEK SURE BLACK U1

Calved: 3/27/23 20778816

Cole Creek Sure Black 1168
COLE CREEK SURE BLACK X106
 Cole Creek Juanadacap 50U

Cole Creek 7 Black 208
COLE CREEK JUANADA G X7
 Cole Creek Juanada G 1054

Cole Creek Automatic 1244
 Cole Creek Juanada Girl 58V
 Cole Creek Black Cedar 46P
 Cole Creek Juanadacap 134R
 Cole Creek 7 Black 1135
 Cole Creek Juanadacap 242
 Cole Creek 1100 Automatic
 Cole Creek Juanita G 53T

Dam's Production: 2 NR @ 97

BW	NR	GR	YR	365	SC
71	108				Too Young To Test

EPDS

BW +1
 WW +38
 MK +28
 YW +64

\$EN +15
 \$W +42

Young X106 son out of 7 Black 208 daughter. We calve a 60 day calving period. Herd bulls breed the cows out in the hills on grass. We feed hay and straw in the winter. Our cows work for us, we do not work for them. They stay out till the snow comes. It is called a Ranch!

365 COLE CREEK SURE BLACK U61

Calved: 3/15/23 20778821

Cole Creek Sure Black 1168
COLE CREEK SURE BLACK X106
 Cole Creek Juanadacap 50U

Cole Creek 7 Black 208
COLE CREEK CLOVANADA W94
 Cole Creek Clova Juanada 44V

Cole Creek Automatic 1244
 Cole Creek Juanada Girl 58V
 Cole Creek Black Cedar 46P
 Cole Creek Juanadacap 134R
 Cole Creek 7 Black 1135
 Cole Creek Juanadacap 242
 Cole Creek Black Cedar 46P
 Cole Creek Clova Juanada 6P

Dam's Production: 1 NR @ 114

BW	NR	GR	YR	365	SC
71	114	93	105	1033	

EPDS

BW +1.8
 WW +44
 MK +28
 YW +73

\$EN +10
 \$W +47

Next 5 calves are out of Sure Black x106 and first calf heifers. Sure Black X06 bred those heifers and we helped 1 in two years. Laid in shoulders and nice narrow heads. Both Gramma's on this calf are Black Cedar 46P

370 COLE CREEK SURE BLACK U43

Calved: 2/23/23 20778845

Cole Creek Sure Black 1168
COLE CREEK SURE BLACK X106
 Cole Creek Juanadacap 50U

Cole Creek Juanada Son 1129
COLE CREEK JUANADA G W15
 Cole Creek Juanada G 1085

Cole Creek Automatic 1244
 Cole Creek Juanada Girl 58V
 Cole Creek Black Cedar 46P
 Cole Creek Juanadacap 134R
 Juanada 7 OF P J M
 Cole Creek Eileen Pride 72
 Cole Creek Black Cedar 1100
 Cole Creek Juanada G 48U

Dam's Production: 1 NR @ 113

BW	NR	GR	YR	365	SC
62	113	94	105	1034	

EPDS

BW +0.3
 WW +42
 MK +28
 YW +69

\$EN +7
 \$W +48

Sure Black X106 son out of a Juanada son crossed on a Black Cedar 1100 Dam. The Black Cedar 1100 daughters are excellent in feet, udders and maternal level top line.

372 COLE CREEK SURE BLACK U68

Calved: 3/07/23 20778846

Cole Creek Sure Black 1168
COLE CREEK SURE BLACK X106
 Cole Creek Juanadacap 50U

Cole Creek 1322 Auto 717
COLE CREEK JUMBOLEEN W42
 Cole Creek S G Jumboleen 855

Cole Creek Automatic 1244
 Cole Creek Juanada Girl 58V
 Cole Creek Black Cedar 46P
 Cole Creek Juanadacap 134R
 Cole Creek 1100 Automatic
 Cole Creek Juanada G 513
 Cole Creek Black Cedar 1100
 Cole Creek S G Jumboleen 3V

Dam's Production: 1 NR @ 114

BW	NR	GR	YR	365	SC
74	114	106	111	1085	

EPDS

BW +2.4
 WW +45
 MK +31
 YW +74

\$EN +8
 \$W +47

Nice Sure Black X106. Dam is Auto 717 who is out of Black Cedar 1100. Gran Dam is Black Cedar 1100 out of the 717 cow who has 717 bull in sale. Selecting genetics from proven cows who have to travel, maintain, breed and raise a healthy calf in rugged grassland environment only.

Retaining 1/2 semen revenue share.

373 COLE CREEK SURE BLACK U25

Calved: 2/19/23 20778847

Cole Creek Sure Black 1168
COLE CREEK SURE BLACK X106
 Cole Creek Juanadacap 50U

Cole Creek 1322 Auto 717
COLE CREEK JUANADA G W88
 Cole Creek Juanada G 46

Cole Creek Automatic 1244
 Cole Creek Juanada Girl 58V
 Cole Creek Black Cedar 46P
 Cole Creek Juanadacap 134R
 Cole Creek 1100 Automatic
 Cole Creek Juanada G 513
 Cole Creek Black Cedar 1100
 Cole Creek Juanada G 15W

Dam's Production: 1 NR @ 94

BW	NR	GR	YR	365	SC
72	94	112	102	1002	

EPDS

BW +2
 WW +33
 MK +28
 YW +58

\$EN +14
 \$W +36

Bred like Lot 372, the Dam is Auto 717 with the Gran Dam Black Cedar 1100. Then the Sire of Sure Black X106 goes back to Black Cedar 1100. Performance testing is a great tool for whole herd comparison. But you get sellers of numbers where they ratio Sire groups, old calf groups, young calf groups or the little contemporary separate groups separate, it does not mean crap. Number break up guy says this is my top calf. In what frikken group, number boy?

374 COLE CREEK SURE BLACK U44

Calved: 3/02/23 20778848

Cole Creek Sure Black 1168
COLE CREEK SURE BLACK X106
 Cole Creek Juanadacap 50U

Cole Creek 1322 Auto 717
COLE CREEK JUANADA G W102
 Cole Creek Juanada G 873

Cole Creek Automatic 1244
 Cole Creek Juanada Girl 58V
 Cole Creek Black Cedar 46P
 Cole Creek Juanadacap 134R
 Cole Creek 1100 Automatic
 Cole Creek Juanada G 513
 Cole Creek Seven Son 67T
 Cole Creek Juanada G 53T

Dam's Production: 1 NR @ 128

BW	NR	GR	YR	365	SC
78	128	105	118	1165	

EPDS

BW +3.3
 WW +54
 MK +31
 YW +84

\$EN +1
 \$W +49

This cow bull out of X106 has a nice Auto 717 Dam. Gran Dam is Seven Son 67T who was a Juanada 7 Son out of a Quantum 3330 Dam, sold to Bruce Palmer in Nebraska.



520 COLE CREEK JUANADA U64

Calved: 3/10/23

20778783

Juanada 7 OF P J M
COLE CREEK PURE JUANADA 679
 Cole Creek Juanadacap 1201

Cole Creek Black Cedar 1100
COLE CREEK JUANADA RITA 1174
 Cole Creek Juanada Rita 1271

Juanada Lad OF R R 22
 Bandomere Carol OF P J M
 Cole Creek Black Cedar 46P
 Cole Creek Juanadacap 134R
 Cole Creek Black Cedar 46P
 Cole Creek Juanada Bird 38N
 Cole Creek Full Juanada 106V
 Cole Creek Juanada Rita 120P

EPDS

BW +1.5
 WW +41
 MK +29
 YW +67

\$EN +11
 \$W +44

Dam's Production: 7 NR @ 107

BW	NR	GR	YR	365	SC
79	113	105	110	1082	

Real good Pure Juanada out of a really good Black Cedar 1100 Dam. Dam is probably my favorite Black Cedar 1100 Dam. Gran Dam is Full Juanada out of the old Cedar 150 cow. Same Gran Dam as bull Lot 348.

Retaining 1/2 semen revenue share.

529 COLE CREEK 529 JUANADA U26

Calved: 2/28/23

20778786

Juanada 7 OF P J M
COLE CREEK PURE JUANADA 679
 Cole Creek Juanadacap 1201

Cole Creek Cedar 791
COLE CREEK JUANADAMERE 205
 Cole Creek Juanadamere 90P

Juanada Lad OF R R 22
 Bandomere Carol OF P J M
 Cole Creek Black Cedar 46P
 Cole Creek Juanadacap 134R
 C H Quantum 6247
 Cole Creek Clova Juanada 44n
 HBR Encore 0544
 Cole Creek Juanadamere 224

EPDS

BW -0.2
 WW +39
 MK +29
 YW +66

\$EN +8
 \$W +45

Dam's Production: 7 NR @ 108

BW	NR	GR	YR	365	SC
75	116				

Heifer bull out of Pure Juanada. Dam is Cedar 791 out of a Pathfinder Encore 0544. Dam is also Pathfinder.

533 COLE CREEK 1272 JACK U52

Calved: 3/17/23

20778851

J MC 539 OF 1272
J MC 1841 OF 5339
 J MC Sweet Sarah 8630

Cole Creek Ridge Line 1243
COLE CREEK Z G SHONADA 945
 Cole Creek Z G Shonada 17U

Cole Creek 1100 Black 1272
 J MC True Bess 3841
 J MC 5504 OF 313
 J MC Sweet Sarah 6620
 Cole Creek Ridge 1340
 Cole Creek Juanada Mist 12T
 Cole Creek Black Cedar 46P
 Cole Creek Shonada 1195

EPDS

BW +0.7
 WW +26
 MK +20
 YW +42

\$EN +22
 \$W +27

Dam's Production: 7 NR @ 97

BW	NR	GR	YR	365	SC
78	99	110	104	1019	

Nice "Jack" out of Ridge Line 1243 Dam. The Dam of Ridge Line 1243 left this fall with 15 wean ratios at 100. She just finally wore out and went to town pregnant at 18 years old. She came out of the hills in the fall raw boned, body score maybe 3, no teeth left but she was pregnant. If you select for functional fertility, you'll have it. If you have to over feed for fertility, you have lost!

541 COLE CREEK 523 CEDAR U105

Calved: 2/21/23

20778852

Cole Creek 1322 Auto 717
COLE CREEK 523 CEDAR W107
 Cole Creek Juanada Bird 224

Cole Creek Goldstock 352
COLE CREEK JUANADACAP 535
 Cole Creek Juanadacap 50U

Cole Creek 1100 Automatic
 Cole Creek Juanada G 531
 Cole Creek Black Seal 230
 Cole Creek Juanada Bird 38N
 Cole Creek Juanada Gold 92P
 Cole Creek Juanadaleen 51S
 Cole Creek Black Cedar 46P
 Cole Creek Juanadacap 134R

EPDS

BW +2
 WW +30
 MK +28
 YW +58

\$EN +12
 \$W +29

Dam's Production: 7 NR @ 93

BW	NR	GR	YR	365	SC
75	98	107	102	1002	

Dam is double bred Juanada Goldmere. Sire is Black Seal 230 Dam who's Dam is Juanada Goldmere. Lined up genetics to create defect free cattle. Proven threw lin breeding.

544 COLE CREEK PURE JUANADA U112

Calved: 2/23/23

20778789

Juanada 7 OF P J M
COLE CREEK PURE JUANADA 679
 Cole Creek Juanadacap 1201

Cole Creek Black Seal 1132
COLE CREEK JUANADA GIRL 655
 Cole Creek Juanada Girl 58V

Juanada Lad OF R R 22
 Bandomere Carol OF P J M
 Cole Creek Black Cedar 46P
 Cole Creek Juandacap 134R
 Cole Creek Black Seal 230
 Cole Creek 104 Juanada 35V
 Cole Creek Juanada Ridge 95R
 Cole Creek 7 OF Juanada 28T

EPDS

BW +0.8
 WW +28
 MK +26
 YW +47

\$EN +17
 \$W +32

Dam's Production: 6 NR @ 97

BW	NR	GR	YR	365	SC
75	99	78	90	884	

Dam is smaller moderate Black Seal 1132. There is no way you'll ever convince me big cows can compete with moderate cows on inputs to maintain in a rugged grassland environment. And for the love of the Angus cow that means they stay out in the hills and raise calves till late fall. They eat brown grass, no weaning early to give the cows a break. No supplement feeding to create the false environment.



HERD TAG: 244 • COLE CREEK JUANADA G 53Ts



548 COLE CREEK PURE JUANADA U21

Calved: 4/22/23 20778791

EPDS

BW +0
WW +26
MK +30
YW +44

\$EN +15

\$W +35

Juanada 7 of P J M
COLE CREEK PURE JUANADA 679
Cole Creek Juanadacap 1201

Cole Creek Black Seal 1132
COLE CREEK EILEEN PRIDE 1455
Cole Creek Eileen Pride 99V

Juanada Lad of R R 22
Bandomere Carol of P J M
Cole Creek Black Cedar 46P
Cole Creek Juanadacap 134R
Cole Creek Black Seal 230
Cole Creek 104 Juanada 35V
Cole Creek Goldmere 31N
Cole Creek Eileen Pride 45P

Dam's Production: 7 NR @ 105

BW	NR	GR	YR	365	SC
70	95	Too Young To Test			

Nice too young for test Pure Juanada son. Dam is Pathfinder and is really good on feet and udder. We do not trim feet. If breeders trim feet, they have a problem. The best and only way to end a foot problem is to cull it out of your genetics not trim it out, you Dingo. What I can't figure out about foot trimmers, how do you lie to yourself?

550 COLE CREEK 550 JUANADA U7

Calved: 2/21/23 20778792

EPDS

BW +1.2
WW +40
MK +28
YW +70

\$EN +5

\$W +42

Juanada 7 of P J M
COLE CREEK PURE JUANADA 679
Cole Creek Juanadacap 1201

Cole Creek Cedar 791
COLE CREEK JUANADA G 176
Cole Creek Juanada G 513

Juanada Lad of R R 22
Bandomere Carol of P J M
Cole Creek Black Cedar 46P
Cole Creek Juanadacap 134R
C H Quantum 6247
Cole Creek Clova Juanada 44N
Cole Creek Juanada Gold 92P
Cole Creek Juanada G 48U

Dam's Production: 6 NR @ 109

BW	NR	GR	YR	365	SC
82	110	97	104	1020	

Super nice thick Pure Juanada son. Dam is Cedar 791 out of the Gran Dam of Herd Sire Cole Creek 1322 Auto 717. She has 8 nursing ratio's at 105. Her son last year was kept here to be a herd Sire which would be a full brother to Lot 550 bull.

Retaining 1/2 semen revenue share.

555 COLE CREEK 555 JUANADA U47

Calved: 2/20/23 20778798

EPDS

BW +0.9
WW +35
MK +29
YW +54

\$EN +15

\$W +42

Juanada 7 OF P J M
COLE CREEK PURE JUANADA 679
Cole Creek Juanadacap 1201

Cole Creek 1100 Automatic
COLE CREEK JUANADAMERE 726
Cole Creek Juanadamere 71T

Juanada Lad OF R R 22
Bandomere Carol OF P J M
Cole Creek Black Cedar 46P
Cole Creek Juanadacap 134R
Cole Creek Black Cedar 1100
Cole Creek Eileen Pride 102W
Cole Creek Cut A Track 46M
Cole Creek Juanadamere 91N

Dam's Production: 6 NR @ 105

BW	NR	GR	YR	365	SC
75	103	91	98	960	

Pure Juanada son out of a Pathfinder 1100 Automatic Dam. The Dam of Lot 555 is Grandson's Zane and Grady's favorite cow. We always have to look her up, as they call her, Triple Nickel. She is a nice feminine cow who always raises a good calf.

557 COLE CREEK 523 CEDAR U80

Calved: 2/18/23 20778853

EPDS

BW +3.1
WW +28
MK +31
YW +57

\$EN +11

\$W +29

Cole Creek 1322 Auto 717
COLE CREEK 523 CEDAR W107
Cole Creek Juanada Bird 224

Cole Creek Juanada Gold 993
COLE CREEK EILEEN PRIDE 876
Cole Creek Eileen Pride 99U

Cole Creek 1100 Automatic
Cole Creek Juanada G 513
Cole Creek Black Seal 230
Cole Creek Juanada Bird 38N
Cole Creek Juanada Gold 92P
Cole Creek Juanada 102P
Cole Creek Black Cedar 46P
Cole Creek Eileen Pride 1259

Dam's Production: 6 NR @ 99

BW	NR	GR	YR	365	SC
86	94	103	98	963	

Cedar W107 cow bull out of a Juanada Gold 993 Dam. The Juanada Gold 993 cows are solid. Good bone, feet, udders and maternal level top line. Should make some really good range cows with this son.

559 COLE CREEK 523 CEDAR U92

Calved: 3/14/23 20778855

EPDS

BW +3
WW +32
MK +29
YW +63

\$EN +11

\$W +28

Cole Creek 1322 Auto 717
COLE CREEK 523 CEDAR W107
Cole Creek Juanada Bird 224

Cole Creek Ridge Line 1243
COLE CREEK JUANADA 416
Cole Creek Juanada 76W

Cole Creek 1100 Automatic
Cole Creek Juanada G 513
Cole Creek Black Seal 230
Cole Creek Juanada Bird 38N
Cole Creek Ridge 1340
Cole Creek Juanada Mist 12T
Cole Creek Black Cedar 46P
Cole Creek Juanada 108R

Dam's Production: 6 NR @ 101

BW	NR	GR	YR	365	SC
84	101	107	104	1019	

Cow bull out of Cedar W107 and a pretty Ridge Line daughter. You know a cow is supposed to look like a cow and a bull like a bull. A cow should be feminine up front, long necked, pretty narrow head, nice udder and a big ass. A bull should be masculine thick up front big muscled neck with a small ass in proportion with his front end. If either start looking like a 2 year old steer, you've lost it.

562 COLE CREEK JUANADA SEAL U77

Calved: 2/27/23

20778856

Juanda 7 of P J M
COLE CREEK PURE JUANADA 679
 Cole Creek Juanadacap 1201

Cole Creek Black Seal 1132
COLE CREEK JUMBOLEEN 996
 Cole Creek Jumbolen 502

Juanada Lad of R R 22
 Bandomere Carol of P J M
 Cole Creek Black Cedar 46P
 Cole Creek Juanadacap 134R
 Cole Creek Black Seal 230
 Cole Creek 104 Juanada 35V
 Cole Creek Black Cedar 1100
 Cole Creek Jumbolen 82V

EPDS

BW +1.2
 WW +47
 MK +29
 YW +76

\$EN +7
 \$W +52

Dam's Production: 6 NR @ 105

BW	NR	GR	YR	365	SC
76	126	91	111	1089	

This is a really good Pure Juanada son out of a really good Black Seal 1132 daughter. Gran Dam was a really good 1100 daughter out of a Pathfinder Juanada Lad 81T Dam. The Cole Creek Black Seal 1132 daughters are excellent uddered with really good feet and maternal top line.

Retaining 1/2 semen revenue share.

569 COLE CREEK JUANADA LINE U4

Calved: 3/20/23

20778871

Juanada 7 of P J M
COLE CREEK PURE JUANADA 679
 Cole Creek Juanadacap 1201

Cole Creek Black Cedar 1100
COLE CREEK JUANADA G 46
 Cole Creek Juanada G 15W

Juanada Lad of R R 22
 Bandomere Carol of P J M
 Cole Creek Black Cedar 46P
 Cole Creek Juanadacap 134R
 Cole Creek Black Cedar 46P
 Cole Creek Juanada Bird 38N
 Cole Creek Juanada Lad 81T
 Cole Creek Juanada G 53T

EPDS

BW +2.3
 WW +47
 MK +28
 YW +78

\$EN +5
 \$W +46

Dam's Production: 6 NR @ 108

BW	NR	GR	YR	365	SC
86	124	96	112	1098	

Really good Pure Juanada out of 1100 Dam. Gran Dam is Juanada Lad 81T who's Sire is Juanada 7. Juanada 7 born in 1969 up front top and bottom of Pedigree. Some things were great back then. Like a friend on mine once said; "If you're hitting on all 8 cylinders, why change?"

Retaining 1/2 semen revenue share.

577 COLE CREEK 1272 JACK U78

Calved: 3/17/23

20778875

J MC 5339 OF 1272
J MC 1841 OF 5339
 J MC Sweet Sarah 8630

Cole Creek Tequila 131
COLE CREEK JUMBOLEEN 1027
 Cole Creek Jumbolen 502

Cole Creek 1100 Black 1272
 J MC True Bess 3841
 J MC 5504 OF 313
 J MC Sweet Sarah 6620
 Cole Creek Goldmere 70V
 Cole Creek S G Jumbolen 76P
 Cole Creek Black Cedar 1100
 Cole Creek Jumbolen 82V

EPDS

BW +2.3
 WW +42
 MK +26
 YW +71

\$EN +10
 \$W +39

Dam's Production: 4 NR @ 106

BW	NR	GR	YR	365	SC
76	109	98	105	1027	

Nice "Jack" calf out of a Tequila 131 Dam. Gran Dam is the Gran Dam of Lot 562 bull also. If you just let mother nature sort your cattle in a grassland environment you will create the low input line of cattle. If you find yourself feeding more to get them bred, supplementing, creep feeding, the whole herd of outsizers so they look good. Your cattle are outsized. Even a duck knows when the pond is dry.

583 COLE CREEK 1272 JACK U12

Calved: 3/03/23

20778877

J MC 5339 OF 1272
J MC 1841 OF 5339
 J MC Sweet Sarah 8630

Cole Creek 7 Black 1023
COLE CREEK 20 JUANADA 57
 Cole Creek 20 Juanada 1310

Cole Creek 1100 Black 1272
 J MC True Bess 3841
 J MC 5504 OF 313
 J MC Sweet Sarah 6620
 Cole Creek Seven Black 311
 Cole Creek Juanadamer 98W
 Cole Creek Black Cedar 46P
 Cole Creek Juanada 549

EPDS

BW +0.8
 WW +24
 MK +26
 YW +44

\$EN +16
 \$W +29

Dam's Production: 5 NR @ 102

BW	NR	GR	YR	365	SC
69	92	94	93	915	

A Jack son out of a really nice made moderate 7 Black 1023 Dam. We are excited about the Jack calves and have plans for another line. You are right here with us on these cattle but I seen the Dam and Gran Dam in a true grassland environment and the line bred herd of Jack McNamnee.

590 COLE CREEK 590 JUANADA U2

Calved: 3/03/23

20778879

Juanada 7 of P J M
COLE CREEK PURE JUANADA 679
 Cole Creek Juanadacap 1201

Cole Creek Black Seal 1132
COLE CREEK JUANADAMERE 397
 Cole Creek Juanadamere 13R

Juanada Lad of R R 22
 Bandomere Carol of P J M
 Cole Creek Black Cedar 46P
 Cole Creek Juanadacap 134R
 Cole Creek Black Seal 230
 Cole Creek 104 Juanada 35V
 Cole Creek Goldmere 31N
 Cole Creek Juanadamere 238

EPDS

BW +1
 WW +34
 MK +27
 YW +58

\$EN +15
 \$W +37

Dam's Production: 4 NR @ 102

BW	NR	GR	YR	365	SC
77	101	97	100	978	

Another nice made Pure Juanada son out of a "Little Seal", Black Seal 1132 Dam. Full brother sold to Chad & Charlie Kanhke in Dakota. Again Dam of 590 bull is excellent uddered, feet and level maternal top line. We are all about making range cows. How do you know your bulls are breeders if the bulls you use are out of stud A.I. bulls who never walked 5 miles to water, never had to travel a pasture to cover the cows, never had stress in their lives.

Retaining 1/2 semen revenue share.

593 COLE CREEK SURE BLACK U93

Calved: 3/11/23

20778880

Cole Creek Sure Black 1168
COLE CREEK SURE BLACK X106
 Cole Creek Juanadacap 50U

Cole Creek 1100 Automatic
COLE CREEK JUANADAMERE 767
 Cole Creek Juanadamere 98W

Cole Creek Automatic 1244
 Cole Creek Juanada Girl 58V
 Cole Creek Black Cedar 46P
 Cole Creek Juanadacap 134R
 Cole Creek Black Cedar 1100
 Cole Creek Eileen Pride 102W
 Cole Creek Juanada Lad 81T
 Cole Creek Juanadamere 58T

EPDS

BW +1.3
 WW +32
 MK +27
 YW +51

\$EN +17
 \$W +38

Dam's Production: 4 NR @ 96

BW	NR	GR	YR	365	SC
72	100	96	98	967	

Sure Black X106 out of the 1100 crossed on Juanada Lad 81T Dam. Range raised, range proven.



716 COLE CREEK 523 CEDAR U94

Calved: 3/28/23

20778882

Cole Creek 1322 Auto 717
COLE CREEK 523 CEDAR W107
 Cole Creek Juanada Bird 224

Cole Creek Goldmere 31N
COLE CREEK CLOVANADA 49V
 Cole Creek Clovanada 24S

Cole Creek 1100 Automatic
 Cole Creek Juanada G 513
 Cole Creek Black Seal 230
 Cole Creek Juanada Bird 38N
 Cole Creek Goldmere OF P J M
 Cole Creek Clovada 397
 BBR Encore 0544
 Cole Creek Clovanada 136M

EPDS	
BW	+2.4
WW	+31
MK	+33
YW	+64

\$EN	+4
\$W	+32

Dam's Production: 14 NR @ 104

BW	NR	GR	YR	365	SC
80	102	Too Young To Test			

Nice to young Cedar W107 calf. Dam is proven longevity, fertility and performance in the dry grassland. Calf is double bred Shoshone Encore 0544. Another old cow that just finally wore out at 16 years old threw years of drought, grasshoppers and long hard winters. Throw a few good years in and you've got tuff cows. I guess the word is longevity but I just call them tuff.

717 COLE CREEK JUANADA LAD U116

Calved: 3/25/23

20778883

Juanada 7 OF P J M
COLE CREEK PURE JUANADA 679
 Cole Creek Juanadacap 1201

Cole Creek Juanada Lad 81T
COLE CREEK S G JUMBOLEEN 3V
 Cole Creek Jumboleen 22S

Juanada Lad OF R R 22
 Bandomere Carol OF P J M
 Cole Creek Black Cedar 46P
 Cole Creek Juanadacap 134R
 Juanada 7 OF P J M
 Cole Creek Juanadamere 34N
 Cole Creek Black Cedar 46P
 Cole Creek S G Jumboleen 76P

EPDS	
BW	+2.5
WW	+46
MK	+28
YW	+76

\$EN	+4
\$W	+44

Dam's Production: 13 NR @ 108

BW	NR	GR	YR	365	SC
78	113	96	106	1043	

Pure Juanada out of a super Pathfinder Juanada Lad 81T Dam. Gran Dam is Pathfinder Black Cedar 46P Great Gran Dam is Pathfinder Shoshone Encore threw 0544 and the mother of Full Bore 730 herd bull in catalog. Gran Dam had 12 nursing ratios at 104 and 12 calves at 363 days calving interval. Dam of Lot 717 has 7 cows in herd.

Retaining 1/2 semen revenue share.

771 COLE CREEK BEN FORKIN U109

Calved: 2/21/23

20778887

Loyning Forkin 92
LOYNING 92 FORKIN 1127
 Loyning Ester 8008

Cole Creek Black Cedar 46P
COLE CREEK 20 JUANADA 1310
 Cole Creek Juanada 549

Shoshone Viking Dg60
 Shoshone Frances 6306
 Horse Butte 6141 OF 3141
 Jad Ester 3750
 C H Quantum 6247
 Cole Creek Clova Juanada 67
 Hero 6267 OF R R 2418
 Cole Creek Juanada 94T

EPDS	
BW	+3.1
WW	+37
MK	+27
YW	+59

\$EN	+10
\$W	+36

Dam's Production: 11 NR @ 107

BW	NR	GR	YR	365	SC
85	108	85	99	970	

Forkin calf out of a Black Cedar 46P who raises a good calf every year. Another old tuff longevity proven Black Cedar 46P daughter.

789 COLE CREEK 1272 JACK U71

Calved: 3/08/23

20778890

J MC 5339 OF 1272
J MC 1841 OF 5339
 J MC Sweet Sarah 8630

Cole Creek Juanada Boy 61V
COLE CREEK Clovananda 1111
 Cole Creek Clova Juanada 4R

Cole Creek 1100 Black 1272
 J MC True Bess 3841
 J MC 5504 OF 313
 J MC Sweet Sarah 6620
 Cole Creek Juanada Lad 81T
 Cole Creek Juanadamere 90P
 HD Dunn High Mountain 2222
 Cole Creek Clova Juanada 988

EPDS	
BW	+0.1
WW	+32
MK	+22
YW	+56

\$EN	+17
\$W	+33

Dam's Production: 11 NR @ 101

BW	NR	GR	YR	365	SC
69	99	101	100	986	

Nice Jack heifer bull out of a Juanada Boy 61V Dam. The Juanada Boy cows have really good udders and feet. 11 Calves at 101 nursing, functional fertility.

790 COLE CREEK 523 CEDAR U86

Calved: 3/09/23

20778891

Cole Creek 1322 Auto 717
COLE CREEK 523 CEDAR W107
 Cole Creek Juanada Bird 224

Cole Creek Full Juanada 106V
COLE CREEK JUANADA RITA 531
 Cole Creek Juanada Rita S

Cole Creek 1100 Automatic
 Cole Creek Juanada G 513
 Cole Creek Black Seal 230
 Cole Creek Juanada Bird 38N
 Cole Creek Juanada Ridge 95R
 Cole Creek Juanada G 53T
 Cole Creek Black Cedar 46P
 Cole Creek Juanada Rita 10P

EPDS	
BW	+0.8
WW	+21
MK	+31
YW	+43

\$EN	+14
\$W	+28

Dam's Production: 11 NR @ 100

BW	NR	GR	YR	365	SC
70	90	93	91	899	

Heifer bull out of Cedar W107. Dam is a Proven Full Juanada 106V who is a real feminine pretty cow.

796 COLE CREEK 1272 JACK U57

Calved: 3/12/23

20778892

J MC 5339 OF 1272
J MC 1841 OF 5339
 J MC Sweet Sarah 8630

Cole Creek Goldmere 70V
COLE CREEK 104 JUANADA 1041
 Cole Creek 104 Juanada 107V

Cole Creek 1100 Black 1272
 J MC True Bess 3841
 J MC 5504 OF 313
 J MC Sweet Sarah 6620
 Cole Creek Goldmere 31N
 Cole Creek Clova Juanada 16N
 Cole Creek Juanada Ridge 95R
 Cole Creek 104 Juanada 23T

EPDS	
BW	-0.2
WW	+28
MK	+24
YW	+47

\$EN	+18
\$W	+32

Dam's Production: 11 NR @ 98

BW	NR	GR	YR	365	SC
70	103	93	99	980	

Heifer bull out of a Goldmere 70V Dam. How can Angus breeders talk about longevity when their oldest cow is 7 or 8 years old? Because the DNA told them. DNA, "Data Not Accurate" makers found in the how old cows, 7 or 8. The number one, and blah, blah, blah. Don't talk about it, prove it!



798

COLE CREEK PURE U70

Calved: 2/28/23

20778893

Juanada 7 of P J M

COLE CREEK PURE JUANADA 679

Cole Creek Juanadacap 1201

Cole Creek Black Cedar 46P

COLE CREEK JUANADACAP 1201

Cole Creek Juanadacap 134R

Juanada Lad of R R 22

Bandomere Carol of P J M

Cole Creek Black Cedar 46P

Cole Creek Juanadacap 134R

C H Quantum 6247

Cole Creek Clova Juanada 67

Cole Creek Goldmere 31N

Cole Creek Juanada Cap 882

EPDS

BW +0.7

WW +30

MK +28

YW +52

\$EN +15

\$W +36

Dam's Production: 11 NR @ 107

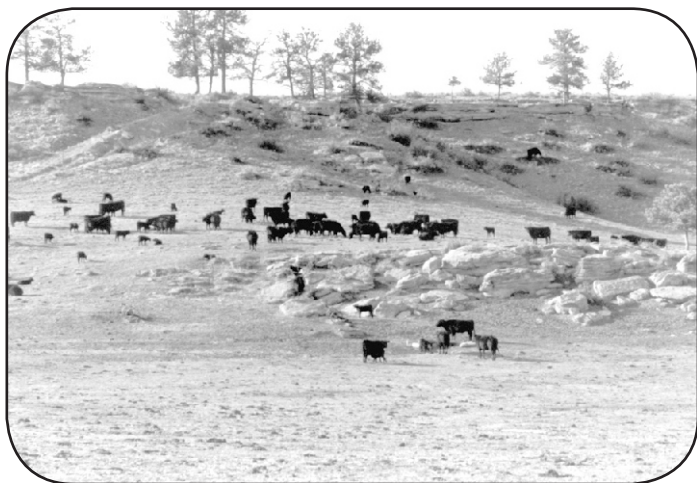
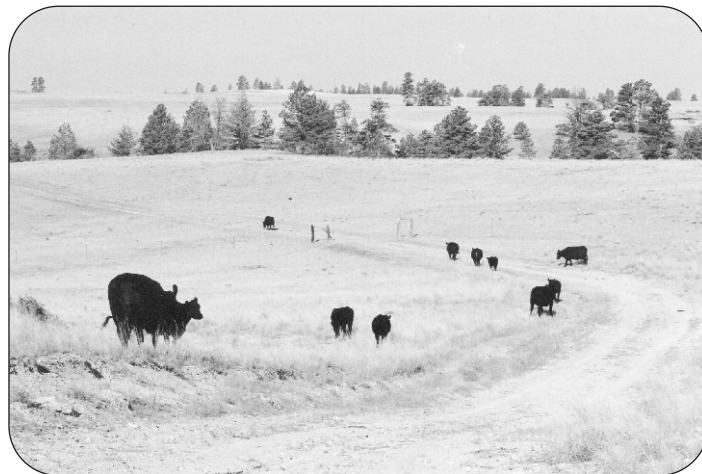
BW	NR	GR	YR	365	SC
68	97	107	101	1004	

Didn't realize this calf was a son on mother till Juanadacap 1201 calved. Pure Juanada son out of Pure Juanada's Dam. She is a proven cow in longevity, fertility and Mother Nature pure.

COLE CREEK ANGUS RANCH

PERFORMANCE RAISED

PERFORMANCE PROVEN



**Cole Creek Angus-
Mainly Mulies**

We Raise Cattle.

We Hunt.

We Kill.

We are Eaters of Meat.

We are Proud of IT!

**We Enjoy and Love Every
Bite!**

**We are Still Hard Working,
Free Americans!
Why? Because it's a
God Given Right!**





Tom Morh developed heifers again this year. They gained 1.42 on test. They were fed some corn silage to develop not fatten.

We raise our cattle the same as we did 50 years ago. They are wintered on hay and straw when the snow covers the grass. The only supplement they get is salt and mineral. All our cattle run in like pastures and are indexed as one unit. We don't believe in the games of the contemporary groups - young calves, old calves, young cows, old cows, sire groups, going to make him the best group or pasture A,B,C,D, etc. Our cattle stand where they stand in our herd. One unit. True efficiency is still best tested when the going gets tough in the often stressful, times of the dry grassland operations. True efficient cattle will excel anywhere. The lazy cattle environment where all the feed, protein and supplement is provided, you don't know if it is efficiency or just growth. Falsified environmental growth cattle will stop and even go down hill in the less than ideal environment where they have to work and travel and not be able to cover up their inefficiencies with feed. I guess it boils down to the type of cattle you want to raise. At Cole Creek Angus, our cattle work for us. Grassland cattle.

Heifers were given Preg Guard 10 and palpitated by Bridger Vet Clinic to insure female development and no surprises. All sale cattle will be ready to go, papers and whatever it takes by Bridger Vet Clinic. Heifers start at \$1,700 bid.

Delivery on heifers at cost.

040

COLE CREEK EILEEN PRIDE U65

Calved: 2/24/23

20778804

Juanada 7 OF P J M

COLE CREEK PURE JUANADA 679

Cole Creek Juanadacap 1201

Cole Creek Black Seal 230

COLE CREEK EILEEN PRIDE 1333

Cole Creek Eileen Pride 99U

Juanada Lad OF R R 22

Bandomere Carol OF P J M

Cole Creek Balck Cedar 46P

Cole Creek Juanadacap 134R

Cole Creek Black Cedar 46P

Cole Creek Juanada G 53T

Cole Creek Black Cedar 46P

Cole Creek Eileen Pride 1259

Dam's Production: 9 NR @ 98

BW	NR	YR
71	101	96

EPDS

BW	+1.6
WW	+34
MK	+25
YW	+58

\$EN +16

\$W +35

We wintered 35 heifers. Kept 12 heifers for replacements. They were just wintered and are not fat. Ready to go to grass and breed. 040 heifer is Pure Juanada. Juanada 7 on Pathfinder 798 Tag cow by black Cedar 46P. Dam of 040 is Black Cedar 46P threw Black Seal 230. Gran Dam is Black Cedar 46P out of the foundation 26 cow, Eileen Pride 1259

300

COLE CREEK BLACK BETTY U95

Calved: 3/04/23

20778805

J MC 5339 OF 1272

J MC 1841 OF 5339

J MC Sweet Sarah 8630

Cole Creek Ridge Line 1243

COLE CREEK SG JUMBOLEEN 958

Cole Creek SG Jumboleen 882

Cole Creek 1100 Black 1272

J MC True Bess 3841

J MC 5504 OF 313

J MC Sweet Sarah 6620

Cole Creek Ridge 1340

Cole Creek Juanada Mist 12T

Cole Creek Black Cedar 1100

Cole Creek S G Jumboleen 3V

Dam's Production: 4 NR @ 92

BW	NR	YR
78	104	109

EPDS

BW	+2.1
WW	+34
MK	+22
YW	+57

\$EN +19

\$W +30

A Jack heifer out of a Ridge Line Dam. Gran Dam is Pathfinder 016 who has bull 016 in sale.



302 COLE CREEK JUANADAMERE U87

Calved: 2/16/23

20778774

Cole Creek 1322 Auto 717
COLE CREEK 523 CEDAR W107
 Cole Creek Juanada Bird 224

Cole Creek Juanada Gold 993
COLE CREEK JUANADAMERE 1278
 Cole Creek Juanadamere 108V

Cole Creek 1100 Automatic
 Cole Creek Juanada G 513
 Cole Creek Black Seal 230
 Cole Creek Juanada Bird 38N
 Cole Creek Juanada Gold 92P
 Cole Creek Juanada 102P
 Cole Creek Black Cedar 46P
 JJJ Juanadamere 5207

EPDS

BW +0.7
 WW +28
 MK +33
 YW +55

\$EN +8
 \$W +35

Dam's Production: 4 NR @ 106

BW	NR	YR
68	94	106

Light birth weight Cedar W107 heifer. Dam is excellent made Juanada Gold 993 out of a Black Cedar 46P dam.

306 COLE CREEK BL JUANADA G U30

Calved: 3/01/23

20778775

Loyning Forkin 92
LOYNING 92 FORKIN 1127
 Loyning Ester 8008

Cole Creek 7 Black 1135
COLE CREEK JUANADA G 1158
 Cole Creek Juanada G 295

Shoshone Viking Gd60
 Shoshone Frances 6306
 Horse Butte 6141 OF 3141
 Jad Ester 3750
 Cole Creek Seven Black 973
 Cole Creek Juanada G 33
 Cole Creek 1100 Automatic
 Cole Creek Juanada G 220

EPDS

BW +1.7
 WW +38
 MK +25
 YW +56

\$EN +16
 \$W +41

Dam's Production: 4 NR @ 99

BW	NR	YR
76	105	97

This is a nice set of heifers with longevity and fertility generations deep. Dam of this Loyning Forkin heifer is 7 Black on Black Cedar 1100 Gran Dam.

341 COLE CREEK JUANADAMERE U96

Calved: 2/26/23

20778778

Cole Creek Black Seal 1132
COLE CREEK BLACK SEAL 488
 Cole Creek Eileen Pride 99U

Cole Creek 7 Black 208
COLE CREEK JUANADAMERE X74
 Cole Creek Juanadamere 108V

Cole Creek Black Seal 230
 Cole Creek 104 Juanada 35V
 Cole Creek Black Cedar 46P
 Cole Creek Eileen Pride 1259
 Cole Creek 7 Black 1135
 Cole Creek Juanadacap 242
 Cole Creek Black Cedar 46P
 JJJ Juanadamere 5207

EPDS

BW +1.6
 WW +40
 MK +30
 YW +67

\$EN +10
 \$W +43

Dam's Production: 2 NR @ 108

BW	NR	YR
70	111	113

Nice Black Seal 488 heifer. Dam is out of a bull we bred our heifers to 7 Black 208. Gran Dam is again Black Cedar 46P. Gran Dam raised 11 calves at 97 nursing ratio and was moderate 1100 pound cow.

347 COLE CREEK JUANADA G U13

Calved: 3/23/23

20778779

Cole Creek Sure Black 1168
COLE CREEK SURE BLACK X106
 Cole Creek Juanadacap 50U

Cole Creek Sure Black 1168
COLE CREEK JUANADA G X113
 Cole Creek Juanada G 48U

Cole Creek Automatic 1244
 Cole Creek Juanada Girl 58V
 Cole Creek Black Cedar 46P
 Cole Creek Juanadacap 134R
 Cole Creek Automatic 1244
 Cole Creek Juanada Girl 58V
 Cole Creek Juanada Gold 92P
 Cole Creek Juanada G 48U

EPDS

BW +0.9
 WW +33
 MK +27
 YW +59

\$EN +14
 \$W +36

Dam's Production: 2 NR @ 93

BW	NR	YR
67	105	101

Lot 347 heifer is Sure Black on top and Sure Black 1168 on bottom. Dam is as gentle as they come. If you're calving heifers in the shed and she is in there, you can sit down and lean against her for a back rest. Great calving ease bred heifer.

350 COLE CREEK EILEEN PRIDE U23

Calved: 2/27/23

20778817

Juanada 7 of P J M
COLE CREEK PURE JUANADA679
 Cole Creek Juanadacap 1201

Cole Creek Sure Black 1168
COLE CREEK EILEEN PRIDE X34
 Cole Creek Eileen Pride 99U

Juanada Lad OF P J M
 Bandomere Carol of P J M
 Cole Creek Black Cedar 46P
 Cole Creek Juanadacap 134R
 Cole Creek Automatic 1244
 Cole Creek Juanada Girl 58V
 Cole Creek Black Cedar 46P
 Cole Creek Eileen Pride 1259

EPDS

BW +0
 WW +34
 MK +27
 YW +56

\$EN +15
 \$W +39

Dam's Production: 2 NR @ 105

BW	NR	YR
63	104	102

Nice Pure Juanada heifer out of a Sure Black 1168 coming 4 year old cow. Great Gran Dam is the foundation 26 cow, Eileen Pride 1259.



361 COLE CREEK SG JUMBOLEEN U27

Calved: 4/07/23 20778819

Cole Creek Sure Black 1168
COLE CREEK SURE BLACK X106
 Cole Creek Juanadacap 50U

Cole Creek Automatic 1244
 Cole Creek Juanada Girl 58V
 Cole Creek Black Cedar 46P
 Cole Creek Juanadacap 134R
 Cole Creek 1100 Automatic
 Cole Creek Juanada G 513
 Cole Creek Black Cedar 1100
 Cole Creek S G Jumboleen 3V

EPDS	
BW	+2.5
WW	+38
MK	+30
YW	+67

Cole Creek 1322 Auto 717
COLE CREEK SG JUMBOLEEN W97
 Cole Creek SG Jumboleen 882

Dam's Production: 1 NR @ 102

BW	NR	YR
67	102	Too Young

\$EN +11
 \$W +38

Nice too young for test Sure Black X106 calf out of double bred Black Cedar 1100 first calf heifer. Gran Dam is the herd Tag 016 cow who has 016 bull in sale.

368 COLE CREEK JUANADALEEN U99

Calved: 2/23/23 20778780

Cole Creek Sure Black 1168
COLE CREEK SURE BLACK X106
 Cole Creek Juanadacap 50U

Cole Creek Automatic 1244
 Cole Creek Juanada Girl 58V
 Cole Creek Black Cedar 46P
 Cole Creek Juanadacap 134R
 Cole Creek Juanada Lad 81T
 Cole Creek Eileen Pride 1455
 Cole Creek Seven Black 311
 Cole Creek Juanadaleen 25U

EPDS	
BW	+2
WW	+46
MK	+30
YW	+72

Cole Creek Z 81T Juanada 969
COLE CREEK JUANADALEEN W62
 Cole Creek ZG Juanada 1363

Dam's Production: 1 NR @ 121

BW	NR	YR
64	121	113

\$EN +7
 \$W +49

Dam of Lot 368 heifer is Juanada Lad 81T crossed on Seven Black 311 Dam. Gran Dam is a Tag 042 and has 042 bull in sale. This calf is out of a first calf heifer.

371 COLE CREEK MISS JUANADA U91

Calved: 2/17/23 20778781

Cole Creek Sure Black 1168
COLE CREEK SURE BLACK X106
 Cole Creek Juanadacap 50U

Cole Creek Automatic 1244
 Cole Creek Juanada Girl 58V
 Cole Creek Black Cedar 46P
 Cole Creek Juanadacap 134R
 Juanada 7 OF P J M
 Cole Creek Juanadacap 1201
 Cole Creek Juanada Gold 92P
 Cole Creek Juanada 102P

EPDS	
BW	+0.4
WW	+35
MK	+27
YW	+57

Cole Creek Pure Juanada 679
COLE CREEK MISS JUANADA W26
 Cole Creek Miss Juanada 172

Dam's Production: 1 NR @ 106

BW	NR	YR
61	106	99

\$EN +16
 \$W +40

Dam is Juanada 7 born in 1969. Gran Dam is Juanada Goldmere born in 1967. You know, back when Angus were Angus. The number breeders are computer cattle, bred to be number one in numbers. Number one in this, number one in that and Blah, Blah, Blah. Their number one in the high input environment. Their number zero in the low input environment when they come in open and are gone.

375 COLE CREEK SG JUMBOLEEN U85

Calved: 0/06/23 20778849

Cole Creek Sure Black 1168
COLE CREEK SURE BLACK X106
 Cole Creek Juanadacap 50U

Cole Creek Automatic 1244
 Cole Creek Juanada Girl 58V
 Cole Creek Black Cedar 46P
 Cole Creek Juanadacap 134R
 Cole Creek 1100 Automatic
 Cole Creek Juanada G 513
 Cole Creek Juanada Lad 81T
 Cole Creek S G Jumboleen 22S

EPDS	
BW	+3.5
WW	+54
MK	+31
YW	+88

Cole Creek 1322 Auto 717
COLE CREEK SG JUMBOLEEN W23
 Cole Creek S G Jumboleen 3V

Dam's Production: 1 NR @ 128

BW	NR	YR
73	128	109

\$EN -1
 \$W +50

Sure Black X106 heifer. Dam is Auto 717, Black Cedar 1100, out of the 717 cow who has Lot 717 bull in sale. Had a breeder once tell me he timed the vigor at birth to see how long it took the calf to get up and suck. My response to that was I'm lucky to see one forth of my calves born let alone time them. Then I realized he must be with his cows 24 hours a day, 7 days a week. I would have to call him, Superman.

516 COLE CREEK JUANADA G U74

Calved: 2/21/23 20778782

Juanada 7 OF P J M
COLE CREEK PURE JUANADA 679
 Cole Creek Juanadacap 1201

Cole Creek Automatic 1244
 Bandomere Carol OF P J M
 Cole Creek Black Cedar 46P
 Cole Creek Juanadacap 134R
 Cole Creek Full Bore 730
 Cole Creek Juanada 92T
 Cole Creek Inciter 253
 Cole Creek Juanada G 118W

EPDS	
BW	+0.9
WW	+29
MK	+25
YW	+54

Cole Creek Black Bore 572
COLE CREEK JUANADA G 444
 Cole Creek Juanada G 080

Dam's Production: 8 NR @ 101

BW	NR	YR
72	94	94

\$EN +17
 \$W +30

Pure Juanada out of a Black Bore 572 Dam. Dam's teets are a little fatter. Pure Juanada should correct that. Her calf always sucks and never have to worry about her. Fatter to me maybe is a good to someone else. There about like my thumb. Gran Dam is the picture cow on the back of catalog.

536 COLE CREEK JUANADA LINE U98

Calved: 2/25/23 20778788

Cole Creek Black Seal 1132
COLE CREEK BLACK SEAL 488
 Cole Creek Eileen Pride 99U

Cole Creek Automatic 1244
 Cole Creek Juanada 35V
 Cole Creek Black Cedar 46P
 Cole Creek Eileen Pride 1259
 Cole Creek Ridge 1340
 Cole Creek Juanada Mist 12T
 Cole Creek Black Cedar 46P
 Cole Creek Clova Juanada 44N

EPDS	
BW	+1.3
WW	+36
MK	+31
YW	+62

Cole Creek Ridge Line 1243
COLE CREEK JUANADA LINE 765
 Cole Creek Clova Juanada 60V

Dam's Production: 6 NR @ 110

BW	NR	YR
67	116	110

\$EN +9
 \$W +42

Black Seal 488 heifer out of a high milking Ridge Line 1243 Dam. Gran Dam was Black Cedar 46P



554 COLE CREEK JUANADA G U83

Calved: 2/25/23

20778795

Cole Creek 1322 Auto 717
COLE CREEK 523 CEDAR W107
 Cole Creek Juanad Bird 224

Cole Creek 1100 Automatic
COLE CREEK JUANADA G 436
 Cole Creek Juanada G 28W

Cole Creek 1100 Automatic
 Cole Creek Juanada G 513
 Cole Creek Black Seal 230
 Cole Creek Juanada Bird 38N
 Cole Creek Black Cedar 1100
 Cole Creek Eileen Pride 102W
 Cole Creek Juanada Lad 81T
 Cole Creek Juanada G 132R

EPDS

BW +1.3
 WW +24
 MK +33
 YW +49

\$EN +12
 \$W +30

Dam's Production: 6 NR @ 106

BW	NR	YR
70	88	95

Dam is really nice made 1100 Automatic and is Pathfinder. 1100 Automatic Dam is Juanada Lad 81T. Gran Dam of 554 heifer is Juanada Lad 81T. Line up proven maternal genetics to make proven maternal cows. You have to breed for soft maternal instinct. A cow that loves her calf and takes care of it. So if you have a cow that butts her calf all over, bellers like she wants to kill it and chases you like a mountain lion after a deer. The no excuse word is, cull that bitch.

573 COLE CREEK SHONADA U11

Calved: 3/21/23

20778873

Cole Creek 1100 Automatic
COLE CREEK PURE JUANADA 679
 Cole Creek Juanadacap 1201

Cole Creek Ridge Line 1243
COLE CREEK ZG SHONADA 1216
 Cole Creek Z G Shonada 17U

Juanada Lad OF R R 22
 Bandomere Carol OF P J M
 Cole Creek Black Cedar 46P
 Cole Creek Juanadacap 134R
 Cole Creek Ridge 1340
 Cole Creek Juanada Mist 12T
 Cole Creek Black Cedar 46P
 Cole Creek Shonada 1195

EPDS

BW +0.2
 WW +25
 MK +25
 YW +40

\$EN +19
 \$W +30

Dam's Production: 6 NR @ 103

BW	NR	YR
69	90	92

This Pure Juanada heifer is out of a Pathfinder Ridge Line Dam. She had 6 calves in 362 day calving interval. The Pure Juanadas are going to be moderate range cows that get the job done.

586 COLE CREEK JUANADA RITA U102

Calved: 2/23/23

20778878

Juanada 7 OF P J M
COLE CREEK PURE JUANADA 679
 Cole Creek Juanadacap 1201

Cole Creek Automatic 1244
COLE CREEK JUANADA RITA 1047
 Cole Creek Juanada Rita 1093

Juanada Lad OF R R 22
 Bandomere Carol OF P J M
 Cole Creek Black Cedar 46P
 Cole Creek Juanadacap 134R
 Cole Creek 1100 Automatic
 Cole Creek Juanada Rita S
 Cole Creek Seven Son 67T
 Cole Creek Juanada Rita S

EPDS

BW +0.8
 WW +37
 MK +27
 YW +63

\$EN +15
 \$W +41

Dam's Production: 5 NR @ 103

BW	NR	YR
68	106	101

Nice Pure Juanada out of Automatic 1244 bred cow. Dam is double bred Juanada Rita S as she is Dam of Sire and Dam of Gran Dam. These heifers average 365 weight is 790 pounds. The breeders that have 1100 pound 365 weight heifers at one year of age that shut down and become the 1100-1300 pound range cows. That can be classified as a miracle. 1800 pound cows having 65 pound calves, another miracle. Their 1800-2000 pound cows can compete with your 1,00-1300 pound range efficient cows in a rugged dry grassland environment, another miracle.

567 COLE CREEK BLACK BETTY U58

Calved: 3/08/23

20778857

J MC 5339 of 1272
J MC 1841 OF 5339
 J MC Sweet Sarah 8630

Cole Creek Black Seal 1132
COLE CREEK COLVANADA 476
 Cole Creek Clovanada 49V

Cole Creek 1100 Black 1272
 J MC True Bess 3841
 J MC 5504 OF 3841
 J MC Sweet Sarah 6620
 Cole Creek Black Seal 230
 Cole Creek 104 Juanada 35V
 Cole Creek Goldmere 31N
 Cole Creek Clovanada 24S

EPDS

BW +3
 WW +36
 MK +26
 YW +65

\$EN +13
 \$W +33

Dam's Production: 6 NR @ 106

BW	NR	YR
78	109	103

Don't know how the Jack heifers or Loyning Forkins will be at birth disposition because we have not calved any. These are the first heifers. The "Jack" cow line is going to be the Black Betty named cows. All Black Betty's will stem from J MC 1841 of 5339. This calf's Dam is an excellent 1132 out of the 716 cow who has bull 716 in sale.

582 COLE CREEK CLOVA JUANADA U53

Calved: 2/22/23

20778876

Cole Creek 1322 Auto 717
COLE CREEK 523 CEDAR W107
 Cole Creek Juanada Bird 224

Cole Creek Tequila 131
COLE CREEK CLOVA JUANADA 17
 Cole Creek Clova Juanada 60V

Cole Creek 1100 Automatic
 Cole Creek Juanada G 513
 Cole Creek Black Seal 230
 Cole Creek Juanada Bird 38N
 Cole Creek Goldmere 70V
 Cole Creek S G Jumboleen 76P
 Cole Creek Black Cedar 46P
 Cole Creek Clova Juanada 44N

EPDS

BW +1.6
 WW +34
 MK +31
 YW +66

\$EN +7
 \$W +37

Dam's Production: 5 NR @ 105

BW	NR	YR
72	102	106

Nice Cedar W107 heifer. You know when you can tell a breeder has a program with a purpose, when every animal in the pedigree has Cole Creek in front of it. Dam is Pathfinder Tequila 131.

594 COLE CREEK BL JUANADA G U9

Calved: 3/04/23

20778881

Loyning Forkin 92
LOYNING 92 FORKIN 1127
 Loynin Ester 8008

Cole Creek Automatic 1244
COLE CREEK JUANADA G 1117
 Cole Creek Juanada G 1391

Shoshone Viking Gd60
 Shoshone Frances 6306
 Horse Butte 6141 OF 3141
 Jad Ester 3750
 Cole Creek 1100 Automatic
 Cole Creek Juanada Rita S
 Cole Creek Balck Cedar 46P
 Cole Creek Juanada G 53T

EPDS

BW +2.1
 WW +34
 MK +24
 YW +55

\$EN +16
 \$W +34

Dam's Production: 5 NR @ 100

BW	NR	YR
75	102	110

Bigger framed heifer out of Forkin 1127. Dam is a nice Automatic 1244 out of a moderate Black Cedar 46P Dam. Excellent feet and udder on the Dam of 594 heifer.



595 COLE CREEK BLACK BETTY U24

Calved: 3/08/23 20778857

J MC 5339 of 1272
J MC 1841 OF 5339
 J MC Sweet Sarah 8630

Cole Creek 1100 Black 1272
 J MC True Bess 3841
 J MC 5504 OF 313
 J MC Sweet Sarah 6620
 BAA Ballard 293B
 BAA Juanada 720A
 BAA Ballard 0201-516 OF GFAR
 Cole Creek Juanadamere 270

EPDS

BW +0.4
 WW +30
 MK +23
 YW +49

BAA Ballard 4231B
BRKN ARROW JUANADAMERE 7531B
 BAA Juanadamere 397B

Dam's Production: 5 NR @ 100

BW	NR	YR
70	100	100

\$EN +18
 \$W +32

This Jack heifer is out of our biggest cow. We brought her from Travis Krein in his dispersion sale. Wanted to try the Ballard blood line as she is Ballard top and bottom and Cole Creek udder that. Nice balanced heifer.

729 COLE CREEK BLACK BETTY U58

Calved: 3/27/23 20778884

Juanada 7 OF P J M
COLE CREEK PURE JUANADA 679
 Cole Creek Juanadacap 1201

Juanada Lad OF R R 22
 Bandomere Carol OF P J M
 Cole Creek Black Cedar 46P
 Cole Creek Juanadacap 134R
 C H Quantum 6247
 Cole Creek Clova Juanda 67
 Cole Creek Goldmere 31N
 Cole Creek Juanada 689

EPDS

BW +0.3
 WW +30
 MK +26
 YW +54

Cole Creek Black Cedar 46P
COLE CREEK JUANADA 76W
 Cole Creek Juanada 108R

Dam's Production: 12 NR @ 102

BW	NR	YR
65	95	TooYoung

\$EN +16
 \$W +33

Nice Pure Juanada out of a time proven Black Cedar 46P Dam. Still here and longevity tuff.

762 COLE CREEK BLACK BETTY U72

Calved: 3/22/23 20778886

J MC 5339 of 1272
J MC 1841 OF 5339
 J MC Sweet Sarah 8630

Cole Creek 1100 Black 1272
 J MC True Bess 3841
 J MC 5504 OF 313
 J MC Sweet Sarah 6620
 C H Quantum 6247
 Cole Creek Clova Juanada 67
 HBR Encore 0544
 Cole Creek Juanadaleen 1544

EPDS

BW +1
 WW +38
 MK +23
 YW +64

Cole Creek Black Cedar 46P
COLE CREEK JUANADALEEN 1240
 Cole Creek Juanadaleen 51S

Dam's Production: 11 NR @ 104

BW	NR	YR
68	111	107

\$EN +14
 \$W +36

Jack heifer out of another longevity tuff Black Cedar 46P Dam. Still here and nursing her 12th calf.

785 COLE CREEK JUANADA RITA U62

Calved: 3/22/23 20778889

Cole Creek 1322 Auto 717
COLE CREEK 523 CEDAR W107
 Cole Creek Juanada Bird 224

Cole Creek 1100 Automatic
 Cole Creek Juanada G 513
 Cole Creek Black Seal 230
 Cole Creek Juanada Bird 38N
 A A R Windy Ridge 523
 Cole Creek Eileen Pride 1259
 Cole Creek Black Cedar 46P
 Cole Creek Juanada Rita 86R

EPDS

BW +1.5
 WW +24
 MK +28
 YW +48

Cole Creek Juanada Ridge 95R
COLE CREEK JUANADA RITA 1181
 Cole Creek Juanada Rita 54T

Dam's Production: 10 NR @ 98

BW	NR	YR
65	89	99

\$EN +15
 \$W +26

Nice young Cedar W107 heifer. Dam is another proven old cow in the grassland environment where grass is the diet be it green in the spring or brown in the fall with average rain fall of 13 inches a year.

Family



Mainly Mulies

Ol' Dog John Hamilton ended his outfitting business. So Ol' Dog Greg Golden retired as a guide after 14 years. Still will be hunting with family and friends. It was a great 14 years and enjoyed it. Still have video's, shirts and hats. My nephew Cage Golden is starting to guide and can be reached at:


406-239-3989.

Thanks to all for the fun and friendship over the years.

SECOND PASSION • MULE DEER!



DISK 1 Raw Bone Vol I

The Evolution Of Trophy Hunters
See Greg's Kids Grow Into Trophy Mule Deer Hunters.
And Greg's Trophy Mulies



DISK 2 Pure Velvet I

Scouting and Filming Velvet Mulies
Follow The Same Mulies Over Years
Special Section On Predators



Mainly Mulies
Greg Golden
PO Box 94
Joliet, MT 59041
406-962-3743

www.mainlymulies.com © 2001, 2002 - Mainly Mulies

**Greg Golden's
Mainly Mulies
Raw Bone & Pure Velvet**

**Mainly Mulies
Volumes 1 & 2**

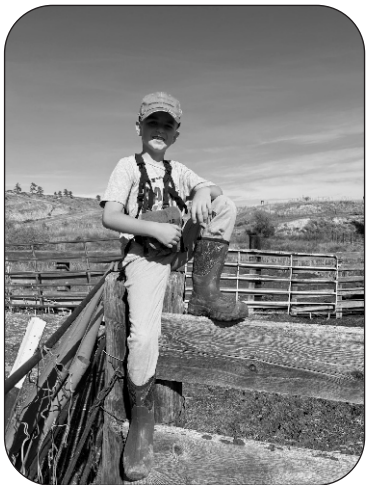
Outstanding Mule Deer Footage!

Volumes: Raw Bone & Pure Velvet

To order your MAINLY MULIES video, caps, shirts or prints, Call:

Greg at 406-962-3743

Family



*Cole
Creek Angus Ranch*
MATERNAL PERFORMANCE



Our Loving Son, Until We Ride Again.



Zachary Forrest Golden

July 27th 1982 - July 14th 2020

You are always with us in our hearts every second of every day.

*Cole
Creek Angus Ranch*
MATERNAL PERFORMANCE

Greg Golden
Box 94
Joliet, MT 59041

ADDRESS SERVICE REQUESTED

FIRST CLASS MAIL



COLE CREEK ANGUS
Breeding Angus For The
Grasslands of America!